

**Napatua Eshinipishats  
Nashipetamits Tsheishinakuats.  
Uaishinakuatakant mishiue  
tshekuan etukuats tsheuaitakant  
nete etakuats mishiue**

Tsheitamakuanan tshishinakuats



Kaushitats:

Kanata- Newfoundland mak Napatua  
Kaueuestakuau nete mamu eatussets  
240 Waterford Bridge Road  
The Tower Corporate Campus – West  
Campus Hall  
Suite 7100  
St. John's, NL  
A1E 1E2

Kaushitats:

**Aivek Stantec Limited Partnership  
141 Kelsey Drive  
St. John's, NL A1B 0L2**

**File No: 121414574**

**Masten Euaitakant Tshekuan  
Tshepishum 2022**

Napuatua eshinispishats nashipetamits tsheishinakuats Uaishinakuatakant mishiue etukauats nete tsheishiuaitakant katakuats.

## Tsheuaitakant mashue Tshekuan

<b>1.0</b>	<b>UAUITAKANU .....</b>	<b>1</b>
1.1	TAN TSHEISHIUAITAKANT UME MAK UTE NAPUATUA ESHINISPISHATS UTE NASHIPETAMIT TSHEISHINAKUATS TSHEISHINAKUATS MISHIUE ETAKUATS.....	3
1.2	TSHENIMENITAKUATS TSHETUKUATS MAK NETSHEISHINKUATS.....	3
1.3	TSHEUAUITSHITUNANUTS MAMU .....	4
<b>2.0</b>	<b>UANTUMESHKAKENT NE ETAKUATS MISHIUE.....</b>	<b>5</b>
2.1	NE UASTENIPAMAKANT PIMI MAK EPIMIUT TSHEKUAN UTE NAPUATUA ESHINISPISHANT ETAKUATS .....	5
2.2	ETUKUATS KAUINTUSSENITANITS .....	6
2.3	KAUSHITAKANTAU NE KAUIATUSSENANUTS MAK TSHENTAPATSHITAKANITSHI .....	8
<b>3.0</b>	<b>TSHEI AIATINIKANT UME ESHINAKUATS .....</b>	<b>8</b>
3.1	ASSIN TAMITS ESHINAKUATS.....	8
3.2	TSHISHUK TSHENISHINAKUATS .....	9
3.3	TAMPEKUTS ESHINAKUATS MAK ENIUIMAKATS TSHEKUAN ETUKUASH.....	10
3.4	MISKUMIN MAK KAMAMISHIT MISKUMIN.....	10
3.5	TSHISHUK ESHIMISKUTSHIPANT.....	10
<b>4.0</b>	<b>KAINIUIMAKATS ESHINAKUATS TSHEKUAN NETE TAMPEKUTS .....</b>	<b>11</b>
4.1	TSHEKUAN EPAPAPINTS TAMPEKUTS.....	11
4.2	NAMESHAT .....	11
4.3	AUESHISHATS ETATS TAMPEKUTS MAK UMENTS (SEA MISSINAKU ) KAISHINIKASHUTS .....	12
4.4	PINESHISHATS KATATS NETE UINIPEKUTS.....	13
4.5	AUESHISHATS TSHETSHI NIPANIKUTS .....	15
4.6	KASHUKA ESHAPATS TAMPEKUTS NE ASSIN .....	16
<b>5.0</b>	<b>KATUTAKANTS MAK TSHEUITUTAKANT MAK AUENTSHI KANUTIMESHETS .....</b>	<b>20</b>
5.1	KATUTAKANITS ATUSSENANUTS KAMISTE TANANUTS MAK KATAKUTS AUENTSHI KANUTIMESHETAU .....	20
5.2	KANUTIMESHETS NETE ETAKUAU UTASSIATS .....	20
5.3	AUENTSHI KANUTIMESHETAU .....	21
5.4	AUENTSHI NITMUK KANUTIMESHETAU TSHETSHI KASTINAKUAU NENU MITSHIMINU MATINUETAU MAMU, MITSHUNANUTS NETE ETANANUTS.....	21
5.5	KANUTIMESHETS UANTUMISKATAU .....	21
<b>6.0</b>	<b>AUENTSHI TSEMISTE APATSHITAKUAU UINIPEKUTS KETAUTSHI.....</b>	<b>22</b>

Napuatua eshinispishats nashipetamits tsheishinakuats Uaishinakuatakant mishiue etukauats nete tsheishiuauitakant katakuats.

6.1	NENU ETAKUUAU ENUTIMESHETAUI MAKE PEIKUNUTS MISHINAU NETE UINUAU ETATS ENUTIMESHETS.....	22
6.1.1	Innu Nation .....	22
6.1.2	NunatuKavut nete Utassiuats kaatussetau.....	23
6.1.3	Nunatsiavut Tsheuatshimau .....	23
6.2	KUTAKUTS EAPATSHITAKUUAU NENU UINIPEKUNU.....	24
<b>7.0</b>	<b>TAN TSHEISHINAKUTAKANT MAK EUAUITAKANT TSHETSHI ISHITUTAKAT .....</b>	<b>24</b>
7.1	TSHE ISHINAKUATS TSHEUAUITAKANITAU .....	24
7.2	TSHENISHINAKUATS NEEKAKAMESHKAKANTAU.....	26
7.3	TSHEMISHINANIKANT UME TSHEKUAN EKAKAMESKAKANT .....	27
7.4	TSHEITSHI NISHINAKUATAKANT NE MISHIUE ETAPITUUSTAKANT NE MAMUUSTAKANTSHE .....	28
7.5	TSHETSHI TSHISTAKANT EUAUITAKANTSHI TAN EISHINAKUTAKANT.....	29

#### **AKUNIKANT ESHINAKUATS**

Akunikan 1-1	Napuatua ne eishinakuats mak eshetshitakant .....	2
Akunikan 2-1	Hercules Kapapamukutish kaishinikatets.....	7
Akunikan 2-2	Stena Carron Kamashats utt kapukunentshet tampekuts .....	7
Akunikan 4-1	Kakashuka shapats assin utte Napuatua tampekuts etutakant.....	17
Akunikan 4-2	Kashuka Eshapats Tampekuts Pineshishats Assinu Mark Pineshishats katats nete uinipekuts etats.....	18

#### **EUAUITAKANTSHI TSHEKUANA**

Table 4.1	Tatukuats eshinakushets nameshets etats ute Napuatua Tampekuts.....	11
Table 4.2	Eshinakushets Auentshi Etakuau nete Uinipekuts Kapimpants mak Nipi Teteu Kaishinikashuts Ute Napuatua Tampekuts Kauintussenimakanits .....	13
Table 4.3	Pepemau eshinakushitau pineshishats etats mamu ute Napuatua tampekuts kauintussenimakanits.....	14
Table 4.4	Kakashapenitakuau tampekuts eshinakuats ute Napuatua kauintussenitakanits.....	19

Napuatua eshinispishats nashipetamits tsheishinakuats Uaishinakuatakant mishiue etukuats nete tsheishiuaitakant katakuats.

## Kataupekastetshi eshinikatekuau

Aivek Stantec	Aivek Stantec Kaatusseskatats
C-NLOPB	Kanata-Newfoundland mak Napuatua Tauts mamu Kaatussetau
DFO	Kanutshikuats Namesha ute uinipekuts Kanata
EA	Nete mishiue tshekuan etakuats kauintussenitakant
EBSA	Kauintussenitakuau nete tampekuts ekashuka shanapats make tshekuan etakuats
FPSO	Kaustipekutits apatshitakant, ekauenitakant tshekuana mak Kaustipekutitsi
FSC	Mitshim emamukatananuts mak kameatshitakant tshekuanu
IK	Nitamuk auentshi eishissenitakuau
MODU	Etapatshitakant tshekuana epukunetshenanut
NL	Newfoundland mak Napuatua
NL ESA	Newfoundland mak Napuatua Aueshishats Katatau utte
SAR	Kamiste uinakatuenimakanits aueshishats
SARA	Kamiste uinakatuenimakanits aueshishats tshenispitukuts
SBA	Tshekuan etakuats epapapints tampekuts
SDL	Kaanimentakuats tshekuan kauimiste ukanuminanuts
SEA	Kauintussenitakants tshe mishinanikant
SEM	Sikumut mamu kaatussekatau
SOCC	Kameste nakatuenitakant nenu etnitakuau
Stassinu Stantec	Stassinu Stantec Kaatusseskatats
VC	Mishiue tshemamupitakant tetukuats tsheeshinakuats

Napuatua eshinispishats nashipetamits tsheishinakuats Uaishinakuatakant mishiue etukauats nete tsheishiuauitakant katakuats.

UAUITAKANU  
Tshepishum 2022

## 1.0 UAUITAKANU

Uitussenitakuanu tsheishimishinanikant euauitakantshe eukun tsheishitshishipinanuts tshetshi apatshit akants nash tsheminu uauitakant tsheishinakuats ne tshiishinakuak ume tshetutakan tshika tshitapatikanu. Tapue eiash tshika ishinakun ume tutakantshe tante ama shuka nispishau tsheanimak mak shuka uitapuetauakue uments uinuau SEA:

- Tshitapakanu ne pimi uuiatshiant nenu etatau aueshishats, tshekuana enitautshiki, auentshi etatau mak eta
- Tsheeka atussenanuts nete mitshima auentshi utassiuats
- Uauitshikanits auentshi tsheuaitamuakanits nenu tsheeka minupinikuts

Kanata- Newfoundland mak Napuatua tauts mamu Kaatussetau eukun uinanu utatusseunuau mak ne tsheutshimau ute Kanata mak tsheutshimau nete Newfoundland mak Napuatua, ume pimina uanutshikuat. Uments C-NLOPB's uitshitapatamuts tsheeka shuka animenitakunits uantussenitakuau nenu eshinakunits uantussenitakuau nenu eshimakuats tshekuan nete nipits enipimikats nete Kanata-NL Kantussenitakuau tshetshi tapuekuau uments C-NLOPB's uaitishuetau:

- Tsheka aiakushiskatshet mak nakatuenimakanits ne Kaiatusseshuts
- Kauitussenitakants tshekuan eshinakuats
- Tsheminu nakatuenitakant ne assin tsheeka nutshiakant pita
- Tshentuumeskakent tshekuan enitautshik ne enipimikats eshimakauats mak espishats
- Kanata Newfoundland mak Napuatua tsheainimenitakuau

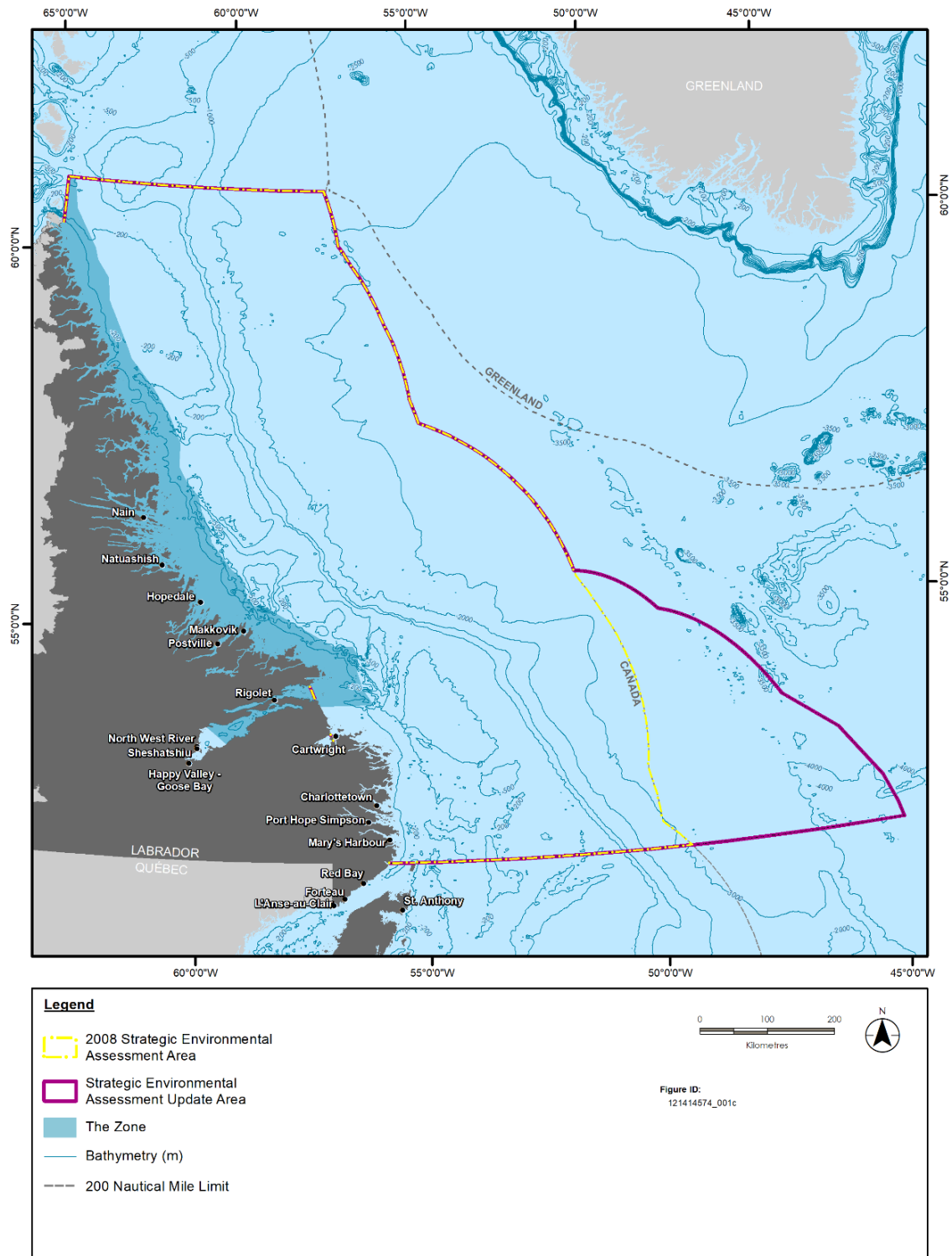
Tsheeka aiaikushinuet mak tsheuinakatuenimakanit auentshi mak nash minu tshitapamakanits tshessi animetshitakuau uments C-NLOPB etenitakuau.

Nte 2002, uinuau C-NLOPB kukuetshimupants nenua SEAs tan tshessi utinakuau espishants ute Kanata-NL Kantussenitakuau mak tshessiminuetau. Nte Upau-pishum 2008, ne C-NLOPB ushimituepat nenua SEA mak Napuatua kaatussetau (nenua SEA eshimishinanikanut). Ute Napuatua eukun enutshikuant nepimi nete tauts kataianuts. Esk ama takunipan tshetshi kastinikant tshetipenitakant. Uments SEA kaissishuetau tshitapatamupants mak nenua kakanauetamintshi nete mamu etutussentshi, me katusseshets nete C-NLOPB mak Nunatsiavut Tsheutshimaua. Uinuau SEA kauaitakuau shash nishitapatamupants nash uanishinakutatau tsheishitshishipinitau enutshiakantshe pimi ute Napuatua kauitussenanut. Shash uinuau ne SEA uipats tshishitapants nenu umishinanikanuaua enkun C-NLOPB shash ueuestamupants kie. Uments C-NLOPB tshika ueuetenitamuentus ispish 2008 SEA kaishiinissenitakuau nenu essi ueshapinitakuau eukun muku tshetshi ushitakant mak nash uitapuetatunants nenu essi uauitakanits ne uatutamits.

Uments SEA shashtshitapatamupants uipats nta 2017, miste tshitapatamupants nenu essi uauitakanits tsheishinakutakuau. Essi uauitakanits tsheishinakutakuau. Tshika tshitapatamuts nenu SEA essi ushitak estinuatshitat nta akunikan 1-1. Neuinuau SEA miste stinuatshitauts nenu tshessi tipenitakuau nete nispish mamit ute Kanata 200 nautical miles essi nispishant uinipekunu.

Napuatua eshinispishats nashipetamits tsheishinakuats Uaishinakuatakant mishiue etukauats nete tsheishiuauitakant katakuats.

UAUITAKANU  
Tshepishum 2022



Akunikan 1-1 Napuatua ne eishinakuats mak eshetshitakant

Napuatua eshinispishats nashipetamits tsheishinakuats Uaishinakuatakant mishiue etukauats nete tsheishiuaitakant katakuats.

UAUITAKANU  
Tshepishum 2022

Ume SEA miste tshitapatamuts tan tshessi euaitakuau nenu tsheishinakutatau mak uaitamuts tshetshi tshenishinakunits pimi enutshikuats nete tauts. Mak mamu tsheatussekuau kutatkuts auentshi essenitakuau (IK), tan tsheishiuaitakuau nenu eshi uaitamentshi umenuau SEA tan tsheishitutakanits tan enu auentshi essi minu apatshitakuau put kie meatshitatau ute Napuatua auentshi katats ute, nenu essi uapatinakanits tan essi unaitakanits tan tshessi apatshitakanits mak tan etenenitakuau mak ueueshitakau nenu uaishinakutats. Ume SEA shash ushitapants nenu tsheishinakuatakauau make tsheishi mishinakuau tan tshetutats uipats ueuestakuau nta 2008.

Ume SEA shash uinuuu tshitamupants mak eueueshintantsi nenu Aivek Stantec kaatussesjatas (Aivek Stantec) mak kaatussesstuats nenua Stassinu Stantec kauits atusse mukuutau (Stassinu Stantec). Shash takunipan ume eshiuaitakanitau nta SEA eishi uaitetau nete mesketau C-NLOPB website ([www.cnlopb.nl.ca](http://www.cnlopb.nl.ca)). ne SEA mass miste uaitamuts tshentumeskatau tan tsheishi tshitapatakuau mak nenua auenua tsheminutshitapataminitshi make nistutamintshi tan essishueanuts nenu tssi uanutshikuant pimi nete uantumeskuan pimi nete uantumeskuan utte Napuatua kauiatussenanut. Ume SEA eukun mishiue tshika uaitamuts nenu tshetutakuau mak SEA essi ueueshitkuau.

## **1.1 TAN TSHEISHIUAITAKANT UME MAK UTE NAPUATUA ESHINISPISHATS UTE NASHIPETAMIT TSHEISHINAKUATS TSHEISHINAKUATS MISHIUE ETAKUATS**

Umenu SEA essiuaitakant tshikamamu uitshieuts nenua C-NLOPB tshetshi mamitunenitamitshi tan tsheishi utinamentshi nenu Napuatua kaatusseshintshi mak tan etenitamintshi tshekustitshets put kie tsheeka shuka pikunikanits nenu uanutshikuakanit pimi make epimiut tshekuan.

Umenu uitautakantshe pimi uanutshikuant nete Napuatua kaatuskuatats SEA kaissiuaitetau eukun nistam tshika minuats tshitapatamuts mak tshetshi uaitshinukuts tan eshinakuatakanits nenu essi kustianuts tsheeka eka aiatinikanits nete uanutshikuanits pimi kauiatussenanants. Tan tshemishiminupanits mamu nete mishiue utte uapatinuanuts nete nash emiste kustianuts put mak espishats tsheatussenanants eukun tan tshe miste atuskakant.

## **1.2 TSHENIMENITAKUATS TSHETUKUATS MAK NETSHEISHINKUATS**

Ume tsheanimenitakuats tshetakuats mak netsheishinakuats (VCs) eukun tshishinakuats ne mishiue tshekuan tsheishinakuats titamuts tshe minu pinukuts emenu uatutakuau tshekuanu, tshueuestakuau, uanutshitakatau. Tsheishiskutamashunanants. VCs eukun statshitamuts mamu emenu entussenitakanits tampenkuts assinu eshinakunits mak nenu etenitakunits eshinakunits mak nenu etenitakunits aiatinikanitshe eatussentamakanits mak put tsheishiuapatinuets tsheishi mishkutshipanits. Eukun C-NLOPB tshika nakatuenitamuts nenu essishuetau kauaitakuau, mak uinuuu VCs tapitu SEA tauts etutakuau:

- Nameshashats mak nameshats nta etataui mushinuu (eukun ntamuk aueshishats etataui [SAR])
- Ntamuk emamishiitits nameshats mak unipekuts kapimpants (including SAR)
- Nitamuk eshinakust pineshishats etataui uinipekuts (eniapits SAR)

Napuatua eshinishpishats nashipetamits tsheishinakuats Uaishinakuatakant mishiue etukauats nete tsheishiuaitakant katakuats.

UAUITAKANU  
Tshepishum 2022

- Kanutimeshenanuts, Kutakuts auentshi kapempaninits kanutimeshets, mak katakuau auentshi kantutauatshets namesha
- Kashuka eshapants tampekuts assinu
- Auentshi tshemiste apatshitakuau

Ume SEA tshitapatumupants nenu tshekuanu ushinakunits nete pimi uanutshikuaukant make tshessi ettu miste animenitakuats mak eukun tshishitshitapatakant.

### 1.3 TSHEUUITSHITUNANUTS MAMU

Mamu utenaua mak netmuk auentshi eukun tshika uitshishitauts nenu SEA eishiuaitamitshi. Mamu utenaua mak netamuk auentshi eukun tshika mamu eshiuaitamuts:

- Uments auentshi kaushitakuau enkun mamu atuskatakau
- Eukun tshika uaitamuts nta uments C-NLOPB website, mak Facebook™ nete kentussenitakunu nenu essi uaitak uments SEA kautakuau mak tshika ushitauts ne mishinanikanu mak tsheuaitakant nete kanitutakanits tshetshi mamu tananuts tsheupatinuants mak utte tshekukuetshimukunek tan etenitamek mak tshika minuanuts kanunts nete mamuitunantshe nenu SEA eishiuaitak tsheishinakunits
- Mak tshika kuketshimukunau tan eshishueanuts neta SurveyMonkey™ (<https://www.surveymonkey.com/>) eukun mamu tshetakuats utte mamuitunantshe
- Ume tshemamuitunanuts tshetakuats Port Hope Simpson, Cartwright, Mary's Harbour, Nent, Pupitents, Pustpin, Makupik, Happy Valley-Goose Bay mak nete Innu Nation Sheshatshiu mamu utenaua mak nete tshemamuitunanuts nete Gull Island. Uitutanipan tshetshi mamuitunanuts nete Natuashish, muku tshika ushitakanu nta tshetshi tutakant umue uitutakantshe. Mak mushinau miste mitshishikau tshishuk tshitshi tutakant nete Euinuats.
- Ume mamu utenaua eukun tshika ushitakanu tanta tshe mamuitunanuts
- Mak Euen tshika kuketshimakanuts muk enists katatau, Ume ne tsheutshimau ts heutshimaua kakaatuskuats, kauiskutimatshet uaitakanits, kanutshimeshets mamu mak kauimamu atussetau.

Ume SEA kaishiuaitak eukun mamu tsheishiuaitakant mak etamputakant nenu etenitakant enu euaitakantshe ne pimi uanutshikuaukant ute Napautua kaatuskanuts. Ume auentshi etenitakuau mak eshishuetau tshika miste tshiapatakanu mak tshetshi tapitustakanua utte tan etenitakant:

- Tsheishi uitamatunants mak tshika ueueshitakanu ne eishi uaitkant
- Tsheishiminakanits auentshi
- Mishiue tshekuan etakuats uinipekuts enkun nete etat pimi nutshikuakantshe
- Auentshi tshe miste apatshtakuau unipekuts ketautshi
- Auentshi kanutimeshets
- Kakashuka eshanapats assin put kie mishiue Napuatua enaneuets
- Tan eshi minuenitakau SEA etenitakanits

Eukun SEA tshitapatakanipan eishi uaitakuau eukun mamu eshitshitapanitanits tsheishinakunits.



Napuatua eshinispishats nashipetamits tsheishinakuats Uaishinakuatakant mishiue etukauats nete tsheishiuauitakant katakuats.

UANTUMESHKAKENT NE ETAKUATS MISHIUE  
Tshepishum 2022

Auents eshinakust eukun tshika miste apatshitakuau miste nakatuenitamupants nete Katatu mak nenu enispitakanits nenu apatshitakanits ute Natuapua kaatskananuts mak tshika tshishitakanu um uantussenitakant tshekuan, mak animentakunu nenu SEA uaishinakuats. Ume auentshi kutakuts katatau tshitapatumuepants nenu SEA essi uauitentshi mak emishinamentshi unauitamentshi:

- Auentshi kamiste apatshitakuau nenu enkun animentakunu mak ne tshekuanu etakunits entuiunau mak aeshisha emiste nutshikuats
- Nenu tshekuan enitautshimakats enispinit mak epipampinit aeshishats tan tshetshi eanimpitakuts
- Tan tshenshinakuats ume pimi uanutshikuats ume pimi uanutshikuakant uinipekuts
- Tan tshenishinakuats enispishitakant tsheeka tapuetuakanits ne tshenispishants

Ume eshiuauitakanits ume uinuu C-NLOPB kaishishuetuau, SEA miste ueeshitapants nenu essi uauitamentshi nenu auenua kutakua enistintau etantshi, Nunatsiavut Tsheutshimau, Innu Nation mak Nunatukavut Mamu Kaatuseeshuts mak tan tsheinakunits euaitakuau mak eshissenitakuau nenu tsheitishuentshi nete VCs. Ne uskats kaushitakant ume Nunatsiavut mak tshika tapitu tshika mamupitamuts nete Aivek Stantec Kaatussushetshintshi mak nenu nete eiapits SEA Kaishishueanuts. Ume Innu Nation shash uitamuepants nenu IK tan SEA kaishiueanuts. Ume Aivek Stantec kaatusseshutau eukun mishitauats nenu IK katutamintshi mak tshemishinanikanits mamu essis ntumeskatau IK katutamentshi. Nte uts ume katapitumintshi SEA kaishishueanuts mak ueeshitakanits IK Kaishishuetuau, eukun minuats katshitapatamentshi nunua Nunatukavut mamu kaatusseshutshetshi tapuetakuau. Ume tshika uauitakanu tshetshinue, ntshe Nunatukavut Mamu Kaatuseeshuts tauts tshetshi mamu uauitamuts nenua mak etantshi essishuentshi eukun ama tshika uauinakanits tshekuan tshika nakatuenitau uts IK kaishi uaitakuau mak eiapits minuats tshatapatamupants mak tshemamupintakuau nte SEA kaishishueanants.

Nete IK etatau mak SEA kaishishueanants, ama shuka takunu nenu tshetshi uapatikanits nte assin mishinanikant mak tshetshi uapatikants tshetshi eka shuka nutshikanits aeshishats etakuau, auentshi eshi apatshitakuau etuuiutau. Ama shuka astitshiknu, ume IK eshi uauitamuata nenu SEA kaishishueanants nash apu nukunits ne assinu espishants tsheapatshitakanits put kie nenu kauipatshitakuau eukun tshetshi tsheminu uinakatuenitakant utte Napuatua kauiatussenant.

## **2.0 UANTUMESHKAKENT NE ETAKUATS MISHIUE**

### **2.1 NE UASTENIPAMAKANT PIMI MAK EPIMIUT TSHEKUAN UTE NAPUATUA ESHINISPISHANT ETAKUATS**

Ume katutakanipant ute Napuatua kaatuskatau SEA kaishuetuau shash miste utinamupants nenu nespish espishants 210,820 km eshinakunits nenu assinu tampekuts etussenitakant nta 1968 ispish 2015. Ume mamu uantussenitakant nta 2015 essi espishats tshash 9,354 km espishats 2D entussenitakant assi nte tampekuats mak tshenispints enanamiskuet assin etussenitakant eukun tutakanipant 2016 ispish 2017 mak ettu estitshitakant entssentikant nta 11,316 km espishats 2D utte

Napuatua eshinispishats nashipetamits tsheishinakuats Uaishinakuatakant mishiue etukauats nete tsheishiuauitakant katakuats.

UANTUMESHKAKENT NE ETAKUATS MISHIUE  
Tshepishum 2022

Napuatua nte uinipekuts tauuts. Nta 2019 ume essi ntussenitakant assin nete tamatum eukun essi ntumeskakant 3D espishats 3,698 km<sup>2</sup> essinispishats eshinakuats ute Napuatua kaatssenanut SEA kaiissishuenanut.

Enkuan nistam kapukuneanut utte Napuatua kaatussenanut SEA kaiissishuenanut mak tutakanipan nta 1970's, mak tetauts nta 1971 mak 1985, 26 essi tutakantshi mak epukunenikanits mak eiapits nta nish mishinanikanipan etinuatshitakant nete mitshima eka shuka timits utte Napuatua natikam. Nenu essi miskakant ume pimi nete epukuntshenanuts, Petetash tatina nenu essi meskuakanipan eukun shash eminuanut, mak essi unapatakan 4.244 trillion cubic feet emishe mishat ettan pimi emiskuakant.

Mak ama shuka tukanipan utte Napuatua SEA kaiissishueanut tshetshi eminuanuts.

## 2.2 ETUKUATS KAUINTUSSENITANITS

Ume etakuats kauintussenitakanits utte Napuatua SEA kaatusseshuts kameskatau nete:

- Entussenitakan assin essi nanamiskuets nte tamatum tampekuts - apatshitakanu tshentumeskakent tsheishipetakuats ne ashimishinanikanit mak ne ashinin essi spekats mak eshetshistakanu ne enispints mak etitakuats Kantussenitakant. Eukun enukutakan nta akunikan eshapatshitakant nete emishats utt.
- Tshekutsukuash tshekuan entussenitakant nte tamatum, tampekuts- tsheapatshitakan akunikan mak uastenitakant tsheishi tshitapatakant nete tampekuts pukunenikantshe mak tshetshiekuskuash, mak kaka shuka shinapashikuats. Ume auentshi kauintussenitakuau nenu esk eka miste pukunekanitshe.
- Tamatum nte tampekuts kantussenitakant/ tshetshi uitshitapatakant – mak tshika ntussenitakanu nete tamatum assin tshetshi utinakant nta pukunenitanitshi mak tshetshi miste nakatuenitakant eka tshekustukuats ume tukuatshe kapukuneitshest.
- Emiste pukunetshenanut tshetshinue – tshitakant – etutakanit eukun pimi shapuetshikut put kie epimiuit tshekuaun eshinakuats.

Ume eshinakuats tshekuan eshiapatshitakant uantussenitakant. Entussesnitakants assinessi nanamiskuets. Nte tamatum mak assin tamits eshinakuats enkun eapits tshemiste uauitakant eshinakuats tshestinuatshitakant nete miste nutshiakantshe. Ume uantussenitakant mak tsheuashitakanitshi nete pukunenikantshe eukun tshash ushitakanipan tsheishinakutakant mak tshash minunakuan tshenutshiakant. Ume pukunentshenanut mak minutussenitakantshe nete pimi mak epimiut tshekuan eukun shash etshishitakant essishueanut etapuenanut, tsheishinakutakant eueueshitakantshe mak tshetshi mishitakant ume tsheutishipitakants nenu tshetshinue apatshitakant etakuats.

Eshinakuatshi nenu pukunenikantshe etapatshitakantshe put kie tsheatinikanitshi nte eanish pukunenikantshe (MODUs) eukun eiapits tshekuan takun tsheishipukunentshenanut nete eutshipekutits mak kamishat utt kapukunentshet. Eukun eiapits apatshitapan ume ne kenankatamua utitshinu utte Kanata--NL kaatussenanut. Ume kapukunentshepints eanish eatinikanu MODU tsheishintussenitakant eatuskanut, ntussenitakanu tan eshitimits, tan espish pukunenikant eshitimits mak tshika nakatuenitakanu miskumi etats nete eatussenanut.

Napatua eshinispishats nashipetamits tsheishinakuats Uaishinakuatakant mishiue etukauats nete tsheishiuaitakant katakuats.

UANTUMESHKAKENT NE ETAKUATS MISHIUE  
Tshepishum 2022



Source: Seadrill (2017)

### **Akunikan 2-1 Hercules Kapapamukutish kaishinikatets**



Source: Stena Drilling (2017)

### **Akunikan 2-2 Stena Carron Kamashats utt kapukunentshet tampekuts**

Ume pimi mak kapimiut tshekuan katutakant eukun kanauenitamupan tshekuanu nete uttit nenu tsheuts apatshitakuau, tshemamunakuau essi meskatau, mak tshenishiapatshitakantshi umenu tshekuana. Mak enispishats utt tan tshessi apatshitakant, put mak tshetshi apatshitakant tshepikuauat miskumina. Nta

Napuatua eshinispishats nashipetamits tsheishinakuats Uaishinakuatakant mishiue etukauats nete tsheishiuauitakant katakuats.

TSHEI AIATINIKANT UME ESHINAKUATS  
Tshepishum 2022

pupnitshe kauauastantsheshut eiapits apatshikanu nete enitshikuakanti pimina mak tshe miskutshipanits kaiatussenshuts. Mak utta kapetautats tshekuana etapitshitakantshi nenu eapishashintshi.

Tshika takun tshekutstukuats nete tsheatuskant pukunetshantshe, mak kaatusseshuts mamu etatauk, passe pishashu (i.e., apu nespashat 500 m espishat nenu atuskanu tshetananuts). Ume kauinakatuenuitakan tshekustukuats eukun tshessentakauau uinuau ne kaatusseshuts tsheupatakuau tsheeka menuants nispinitshe. Ume uitshitapatakantshe ne tshekustukuats eatussentanuts, *Kanata kapushitakant 2001* eukun nistam nenua utta tshetshi takuau nete etananuts..

## **2.3 KAUSHITAKANTAU NE KAUATUSSENANUTS MAK TSHENTAPATSHITAKANITSHI**

Ute kaushitakantau kaitatussenanuts mak kutakua tshessi meskankant utte Napuatua SEA kassishuenaunuts, mak nete kaatussenanuts. Nete pimi enutshikuant nenu essi meskuakant mak eiapits tshika ushitakanu tshetshi tapuetatunanuts nete etananuts. Enkun tshetshi tapitupitakant emenu essi ushitakant nenu mamu tsheutshimau tsheupatak tan tshenispinits. Tan tsheishiapatshitakant tshekuan ume uinutshikakanua tan tsheishitutakant tan tsheshitshitapatshikant, tsheitishueanuts tan tsheishinakutakants, mak tan eshinakutshi, tan tshenispishats mak tante tshentuapatikanits tshekuan uanutshiakant. Nakatuapatakanu peta tan tshessi ntussenitakant ume uanutshiakant etapuetatunant (espishats tsheisstutakan 10+ ustetshe epuputs), SEA kaishishuetau eukun uinuu kanuitamiupan nenu tshenitshitapatakuau nenu etakunitshi kapukunenikanits kaatussenshintshi mak etapitshitakantshi tshekuauna.

Kapukuntsheshashuts kaatusseshuts eukun apatshitapants kie ume Kananta – NL kaatuskanits nete mak akute ishinakun eukun (Hibernia and Hebron) kaishinakuatshi kakutishi nte tauuts, mak etakuats, mak astashunanu eiapits mak etakuats ekiuashunanuts (FPSO) utta katsikuatshi mak etapistashunanuts ne tshessi pukuenikant mak tshemakuputakantshi FPSO apisha/ utitshina/ tsheuspanpishepitakantshi tshekuauna (Terra Nova and the SeaRose).

## **3.0 TSHEI AIATINIKANT UME ESHINAKUATS**

Tsheishi iaitinikant ume eshinakuats utte Napuatua SEA kaissishuetau mamu kaatusseunanuts eukun ne nipin essi nispishatshi tshentussenitakantshi utte Napuatua kaatussenanuts mak tshika nispish ntussentakunu nipi eshukuats nete shuneu mak essi nikuass, ume nipi essi timits 4,000 m essi espishats nete nashuk eneueuats. Eukun tshiishintusenitakanu tshetshi etuish minu tshitapakant.

### **3.1 ASSIN TAMITS ESHINAKUATS**

Ume utte Napuatua kanashipetamit ishinakuats eukun tshika nishinakun 150 km eshakuau espishats nete nashipetamits nete tauuts eshinakuats mak eshiuauapatakant ne eishitimits 70 m eshinkuts mitshima nete enashipetamits, eukun eiapits ekakunatauats nespish ishinakun nte mamit mak nete nashuk ishinakun nete enashukuauats enutshitimits 200 m espishats. Nenu essi nishinakuats eukun essi

Napuatua eshinishpishats nashipetamits tsheishinakuats Uaishinakuatakant mishiue etukauats nete tsheishiuaitakant katakuats.

TSHEI AIATINIKA NT UME ESHINAKUATS  
Tshepishum 2022

tshissekaunakuats 3000m espishats. Mak nete kueste espishats 200 nautical mile ishinakun nass miste timiu, nenu 3,000 mak 4,000 m mak ettu essi miste timits. Utte Napuatua nashipetamits katananuts eukun neuets tshi isshi tshitapatakan: tsheka tutanit eka miste nutish, eka shuka kukanipeats mak eka pepeskunakuats, mak enanikuashit nete nashupetamits eshinakuats mak ekukunapeats.

Nte tamatum tampekuts mak mitshina tamatum tampekuts ne tshekuan etukuats utte Napuatua nashipetamits ne SEA kaishiuaitakuau eukun mamu eshinakuts ashini atamits estets, emamupint mak etukuats nte tamits tampekuts, Kananamiskuets assin eukun eiapits enakatuenitakant utte Napuatua Nashipetamit ne SEA kaishiuaitakuau eukun tshemiste kanauenitakuats tsheis hinakunits mak ume Napuatua kaissiuanutshikatau eukun tshetshi miste takunits nenu eka tukunits tshemiste aiashipatakant ne assin utte tamatum tan espish nete.

### **3.2 TSHISHUK TSHENISHINAKUATS**

Utte Napuatua SEA kaissinshuetau eukun eiapits tshika uintussenitamupan tan espishats enenanuts mak mishiue etananuts eatussenantshe eukun uamintussenitakant tshetshi menuats, nenu tsheka miste tukuats ne epiminanuts etshituepints nete eatussenanuts mak epiminatau mishinau kapiminashets.

Emistinutits mak tante uetits mak eshinkuats netshishuk. Mishiue uetshish eanish enapentshi umetshishuk mak eiapits tshika tshitapakanu ne uinipek tante etishukuit. Nanekutini napitshi eukun emistinutits mak ne puputshi.

Tshika eiapits tshitapakanu essi mamishitits eskets nenu nuash espitikau 1.0 mak 3.0 m essi eshinipitikuau. Nenu mak ume 100 pupuna eshinishpintau nenu utts 1.6 nispish 14.5 m, nispitikuau nenu essi makaiatshi tan eshi tshishikatshi.

Nenu essi takak Tshepishum mak Uniskupishum eukun pishumuts neun takats nte tetauts at  $-8.8^{\circ}\text{C}$  and  $0.7^{\circ}\text{C}$ ) mak tshtets nta Upaupishum (eukun enun etshitets tetauts  $5.9^{\circ}\text{C}$  mak  $11.5^{\circ}\text{C}$ ) mak nete uinipekuts essi tshitets Upaupishum (enkun pushumuts nte tetauts ( $6.9^{\circ}\text{C}$  mak  $12.0^{\circ}\text{C}$ ) mak emiste takat nta Pishimuss eukun pishumuts nta tetauts ( $1.4^{\circ}\text{C}$  mak  $5.8^{\circ}\text{C}$ ), nta eshi tshishikatshi.

Nenu epupuatshi enkun tshitshue emiste mishats tan tshenishinakuats tshishuk, mak epiuatshi ama shuka miste mishau tshenukuats tshishuk tsheishinakuats. Eshakuatshi eukun miste nashikupanu tan tsheuetish mak napitshi eukun miste nashikupanu tan tsheishinakuats tshishuk.

Ekushukatshi mak kaishieka nukuats utte Napuatua SEA kaishiuatakant eukun espishats netshishuk eshitshitapatakant ume 28.7% espishats mak tan espish nishinakuats 10 km espishinakuats nta napitshi ama shuka mishapan eukun muku 1 km essinipishinakuats.

Napuatua eshinispishats nashipetamits tsheishinakuats Uaishinakuatakant mishiue etukauats nete tsheishiuauitakant katakuats.

TSHEI AIATINIKA NT UME ESHINAKUATS  
Tshepishum 2022

### **3.3 TAMPEKUTS ESHINAKUATS MAK ENIUIMAKATS TSHEKUAN ETUKUASH**

Ume eshinipanits uinipek eukun eishikuanipeats 65.9 cm/s mak essi timits nete 200 m, mak essi tshiskatimits nete ekanats 74 ispish 65.4 cm/s. Mak eiapits nishueets eshinakun ne eshukuuts nipin utte Napuatua eshinispint; nenu essi kukuanipeats etispinit nipi enatakanpempints, nete eiapits etushukuit ekukuanipeats. Ne nipin etutakuats eukun etispanits ekuapinits epapintshi. Nete tauauts eukun mishiue etshuskatshunits utte Napuatua eshikuanipeats. Nanekutini eukun emiste tshuskatshunits eku minuats kuet emetinukut nete etishukut.

### **3.4 MISKUMIN MAK KAMAMISHIT MISKUMIN**

Utte Napuatua SEA kaissishuanuts nete katananuts eukun tshika nakatuapamakant miskumin epemakuntshi eapishishats miskumin nta epuputs 1987 espish 1996 mak eiapits nta 1997 espish 2006, eku eiapits emamishitikuau nta 1997 espish 2016. Ume IK tshitapamepant tan espitinitshi nenua miskumina essi pepamakuntshi shash uipats nishinakunu, eukun eapits uauitakanipan tshetshi eka pepampinanuts nete. Mak utte Napuatua shakunitshi emiste nukushit miskumin epapamankunt.

Ume passe miskumin emamishitikuau eukun uets unapamakanits nete Kanata eshakatuet pishum eukun uetshipanit ume miskumin nete Greenland, 90% espishants uets uetankunt nete Greenland nenu etuspintshi uinipek. Mak ett etapukut nete David Strait mak Baffin Bay. Eukun eutshipant utts Kanata kauiatussenanut. Eukun nete mamits kauimiste nutshiakanit uets uetankut nete Baffin mak Napuatua eshipimpanits uinipek. Eukun mak nenu, essi uapamakanits utte Napuatua kamiste pepamak ut utte kauiatussenanut, nenu espishinakushitau ume uanapamakanits 1,587 etatishikuau nta 2008 mak ispish 6,087 etatishikuau nta 2014. Ume kamiste mamishitikuau miskumints eukun mushinau nakatuapamakanits eshukun pishumua nenu epuatshi utte Napuatua, enkun tshitshiue emiste nukushitau nta (Niss ipishumua mak tshetan pishuma ustetshe 4,500 etatishikuau eshukum pishumua).

### **3.5 TSHISHUK ESHIMISKUTSHIPANT**

Tshishuk eshimiskutipant eukun ssenitakun eshinakuts nenu essi eka minupanits nete uinipekuts eshitshitets mak etakats, miskumin, uinipek eshintussenitakuats, mak essi ishinakuats, mak miste nishikuats tshishuk, mak tsheishi mastinutits nete etananuts. Nenu eishi tshitapatakant tshishuk tan eishispanits eukun shash miste nukun emiskutshipanit tan tshenispint tsheishinakuts, mak tshika tshemiste tshipinit eku miskutshipantshe eukun mishiue kanitautshik tshekuan mak kainitautshiki assits etakuatshi tan etakuatshi. Eukun tsheishi tshitapakanit tshishuk essi miskutshipanit nenu eshiapatshitanau etakuaki.

Napuatua eshinispishats nashipetamits tsheishinakuats Uaishinakuatakant mishiue etukauats nete tsheishiuauitakant katakuats.

KAINIUIMAKATS ESHINAKUATS TSHEKUAN NETE TAMPEKUTS  
Tshepishum 2022

## 4.0 KAINIUIMAKATS ESHINAKUATS TSHEKUAN NETE TAMPEKUTS

### 4.1 TSHEKUAN EPAPAPINTS TAMPEKUTS

Ume tshekuan epepapint tampekuts eukun etakuats utte tamatum mak tshetshi essi uapatakanits tan eshinakuats nete tampekuts. Ume tshekuan tshika ishinakun etshitapatakant eukun nistueets eshinakuats. Aueshishats nete katats nete ekatemints enekaunits, tampekuts kametshumishinits ekashapanits mak emeskuants nekanu, mak kapepamuteshuts auenishats nete tamatum utte Napautua SEA kaishishuetau eukun etakuau nete Iceland aueshishats etats tamatum scallop, kauapashets pemituteu, anishueskashu, coral make sponge aishinikatakanits.

Ume Corals mak sponges kaishinikatakanits eukun eka uapukunutshi eka uskateapeutshi, nash metinu mamu enitautshitau nete tamatum eukun tshitshue miste animetakuna nete etakuanikau. Mak amahuka shapenitakuna mak shuka tsheushipikupintshi nete etakuatshi, mak eiapits eapatshitakuau ne kanutimeshek kenaniuetapeutshi anipina nete tamatum mak etananuts pimi kauinutshikuats. Coral kaishinikashuts eukun tepan utte Napuatua SEA kaishishueanuts eukun ume black corals, gorgonian, cup corals, sea pens, mak soft corals.

### 4.2 NAMESHAT

Tshitshue mitshetu nameshats ettats utte Napuatua Sea kaishishuetau tan eshinakushitau. Eukun euauinakanits nta Table 4.1 eukun uments kantussenimatau nenua namesha (DFO) kaishintussenimatau etanikuau nta utts 2007 ispish 2018. Nenu essi nispishants euku IK essi meskatau essishuentshi umenua NUNATUKAVUT MAMU KAATUSSESHUTSmak Nunastisiavut Tsheutshimau tshetshi tsheapitshitakanits nenu nutimeshenanuts nenu euauitkanits nete assin mishinanikanits eukun tshetshi uapatakan ne Chapter 9 uments SEA kaishishuetau. Ume tsheuauinakanits eshinakushets nameshats eshinakushitau nta Table 4.1.

**Table 4.1 Tatukuats eshinakushets nameshats etats ute Napuatua Tampekuts**

Eshinikashutau Aueshishats etats	Eshinikashutau Aueshishats etats
<b>Demersal</b>	<b>Demersal (cont.)</b>
Acadian redfish*	Atimu-unushu*
American upimishui	Sand lance
American plaice*	Unipekuts Kakatshu
Ueushu etta (NL population)*	Kakauteuskanit pishish mistukuake
Mishta-pakatitshu	Silver hake
Ueushu etat nete miste takants nipinu	Smooth skate (Funk Island Deep population)*
Arctic eelpout	Spotted wolffish*

Napuatua eshinispishats nashipetamits tsheishinakuats Uaishinakuatakant mishiue etukauats nete tsheishiuaitakant katakuats.

KAINIUI MAKATS ESHINAKUATS TSHEKUAN NETE TAMPEKUTS  
Tshepishum 2022

**Table 4.1 Tatukuats eshinakushets nameshats etats ute Napuatua Tampekuts**

<b>Eshinikashutau Aueshishats etats</b>	<b>Eshinikashutau Aueshishats etats</b>
Atlantic w olffish*	Thorny skate*
Black dogfish	White hake (Atlantic and Northern Gulf of St. Lawrence population)*
Blue hake	Witch flounder
Cusk*	Yellow tail flounder
Deepwater redfish (Northern population)*	<b>Tauuts nash etataui nete uinipekuts</b>
Miste papakatshiu etat muku Greenland	Kauskanuust
Haddock	Utshashumek (utte Newfoundland etakuau; Gaspé-Southern Gulf of St. Lawrence etakuau; Inner Bay of Fundy etakuau; Outer Bay of Fundy population; Eastern Cape Breton etakuau; Nova Scotia Southern Upland etakuau; Quebec Eastern North Shore etakuau; Quebec Western North Shore etakuau; Anticosti Island etakuau)*
Kaup's arrowtooth eel	Atlantic bluefin tuna*
Longfin hake	Shushashu
Kauteskanit mistikuake	Basking shark (Atlantic population)*
Lumpfish	Blue shark
Marlin spike	Keskemeskush
Monkfish	Greenland shark
Northern wolffish*	Porbeagle shark*
Roughhead grenadier	Shortfin mako shark (Atlantic population)*
Roundnose grenadier*	Spiny dogfish (Atlantic population)*
Spinytail skate	White shark (Atlantic population)*
* Eukun nameshats kainakukushets tsheeka miste aiatinakanits nete etatu (SAR) mak kutakuts tshe miste nakatuenimakanits (SOCC)	

### **4.3 AUESHISHATS ETATS TAMPEKUTS MAK UMENTS (SEA MISSINAKU ) KAISHINIKASHUTS**

Aueshishats katats tampekut mak uments Sea Missinaku kaishinikashuts eukun tepants uipats utte Napuatua mak Napuatua uinipekuts eshueueapi shikuanits mak tetshissekaukuants. Uments neuets ishinakushuts etatau utte tampekuts emiskutkanits utte Napuatua SEA kaishishuetau: mysticetes (baleen whales), odontocetes (toothed whales), pinnipeds (seals and walrus), mak assista takats (Uapuskuts). Eapits nishuets ishinakushu ume (sea missinaku katats utte Napuatua SEA kaishishuetau. Uments aueshishats katats mak sea missinaku eukun eunauinakanits nete pepemau kaishinakushitau utte Napuatua SEA kaishiuaitakuau enkun uments Table 4.2.



Napuatua eshinispishats nashipetamits tsheishinakuats Uaishinakuatakant mishiue etukauats nete tsheishiuauitakant katakuats.

KAINIUI MAKATS ESHINAKUATS TSHEKUAN NETE TAMPEKUTS  
Tshepishum 2022

**Table 4.2 Eshinakushets Auentshi Etakuau nete Uinipekuts Kapimpants mak Nipi Teteu Kaishinikashuts Ute Napuatua Tampekuts Kauintussenimakanits**

Eshinikashutau Aueshishats etats	Eshinikashutau Aueshishats etats
<b>Mysticetes</b>	<b>Odontocetes</b>
Uapamekuian (Cumberland Sound estatishikuau nete, Eastern Hudson Bay estatishikuau, St. Lawrence Estuary estatishikuau, Eastern High Arctic-Baffin Bay estatishikuau, Ungava Bay estatishikuau Western Hudson Bay estatishikuau eukun mamu etakuau nete)*	Northern bottlenose w hale (Davis Strait-Baffin Bay-Labrador Sea Population)*
Blue w hale (Atlantic population)*	Harbour porpoise (Northw est Atlantic population)
Bow head w hale (Eastern Canada-West Greenland population)*	Killer w hale (Northw est Atlantic / Eastern Arctic population)*
Fin w hale (Atlantic population)*	Long-finned pilot w hale
Humpback w hale	Narw hal*
Minke w hale	Kuekuatshess
North Atlantic right w hale*	Kuekatshess
Sei w hale*	Kuekuatshess
<b>Pinnipeds</b>	Sow erby's beaked w hale*
Uapistun	Sperm Whale
Kamisteuapiuatut utnita atshuk	White-beaked dolphin
Kaupiuneushets atshuk	<b>Sea Missnak<sup>U</sup></b>
Harbour atshuk	Leatherback sea Missnak <sup>U</sup> *
Harp atshuk	Loggerhead sea Missnak <sup>U</sup> *
Hooded atshuk	<b>Assits katats aueshishats</b>
Ringed atshuk	Uapusk
* Eukun aueshishats kaishinikashutau tsheeka miste aiatinakanits ete etatau (SAR) mak kutatkuts tshemiste nakatuenimakanits (SOCC)	

#### 4.4 PINESHISHATS KATATS NETE UINIPEKUTS

Tshitshue mitshetipants etats utte Napuatua SEA kaishishuetau eukun uments uinipekuts pineshishats, neritic seabirds, tapitu kamamupunits, mak nashipetamuts mamu Katakuau (Table 4.3). Uments pineshishats nashipetamits mak nenu eshussuunits nashipetakuts tshetshi mamu uiustinukuau, tshetakuau mamu nenu epupunitshi, put kie etshiu epinitau nete eka takanits, put kie eminipintshi umikuanua. Mak nete emitshenitshi minestukua utte Napuatua eukun mamu eshussuunits katatau eukun alcids, tshinaskut, uaustinukuau mak kutakuts etatau nete mishiue shuneueats pineshishats.

Napuatua eshinispishats nashipetamits tsheishinakuats Uaishinakuatakant mishiue etukauats nete tsheishiuauitakant katakuats.

KAINIUI MAKATS ESHINAKUATS TSHEKUAN NETE TAMPEKUTS  
Tshepishum 2022

**Table 4.3 Pepemau eshinakushitau pineshishats etats mamu ute Napuatua tampkuts kauintussenimakanits**

<b>Eshinikatakanits</b>	<b>Eshinikatakanits</b>
<b>Unipekuts Pineshishats</b>	<b>Nashipetamits katat (meumuku mauakuts)</b>
Northern Fulmar	Muak
Cory's Shearwater	Nisk
Great Shearwater	Green-winged Teal
Sooty Shearwater	Inniship
Manx Shearwater	Passip
Wilson's Storm-petrel	Ueuinikuteuats
Leach's Storm-petrel	Ahaueu
Northern Gannet	Kuishkushipatam
Kakatshishipats	Umamuk
Kaupissipeiet Kakatshishipats	Kuaikan
Red-necked Phalarope*	Mishikusuk
Wilson's Phalarope	Mistashuk
Red Phalarope	Mishtashiku
Pomarine Jaeger	Uahiku
Parasitic Jaeger	<b>Aiapaniss</b>
Long-tailed Jaeger	Piping Plover*
Great Skua	Black-bellied Plover
South Polar Skua	American Golden-plover
Ivory Tshinask*	Semipalmated Plover
Ross's Tshinask*	Eskimo Curlew*
Laughing Tshinask	Greater Yellow legs
Black-headed Tshinask	Lesser Yellow legs
Ring-billed Tshinask	Solitary Shesheshu
Herring Tshinask	Spotted Shesheshu
Thayer's Tshinask	Whimbrel
Iceland Tshinask	Ruddy Turnstone
Mishi-Tshinask	Sanderling
Glaucous Tshinask	Semipalmated Shesheshu
Great Black-backed Tshinask	Western Shesheshu
Black-legged Kittiwake	Least Shesheshu
Sabine's Tshinask	White-rumped Shesheshu
Caspian Tshinash	Pectoral Shesheshu
Common Tshinash	Purple Shesheshu

Napuatua eshinishpishats nashipetamits tsheishinakuats Uaishinakuatakant mishiue etukauats nete tsheishiuauitakant katakuats.

KAINIUI MAKATS ESHINAKUATS TSHEKUAN NETE TAMPEKUTS  
Tshepishum 2022

**Table 4.3 Pepemau eshinakushitau pineshishats etats mamu ute Napuatua tampkuts kauintussenimakanits**

Eshinikatakanits	Eshinikatakanits
Arctic Tshinash	Buff-breasted Shesheshu*
Dovekie	Dunlin
Common Kaitshinikuteu	Short-billed Dow itcher
Thick-billed Kaitshinikuteu	Red Knot*
Razorbill	<b>Landbirds</b>
Black Guillemot	Peregrine Falcon*
Tshetshukuteshu	Short-eared Owl*
<b>Nashipetamits katat (meumuku mauakuts)</b>	Olive-sided Flycatcher*
Nutshipaushtikueshish (Eastern katat)*	Mamitshikushish*
Barrow's Mishikus (Eastern katat)*	Gray-cheeked Thrush*
Kamikuakueuets Muak	Tshatshakanu*
* eukun pineshishats kaishikashutau tsheeka miste aiainakanits nete etatu (SAR) make kutakuts tsheniste nakatuenimakanits (SOCC)	

## 4.5 AUESHISHATS TSHETSHI NIPANIKUTS

Tsheeka mutshikuanits uments pineshishats eukun miste ekustanitau, tsheeka miste pikunikanits aiainakanits nete etatau, put kie uinuau kaishishetau (SARA) ekun stukuats mak kustukunu eshi tutakanits tsheeka nutshikakanits nete etatau, put kie uinuau kaishishetau SARA tsheeka nutshikakanits mak tsheeka nutshikakanits nete Napuatua mak Newfoundland kamiste kustitshetau (NL ESA). Eukun miste nakatuenimakanits mak tsheeka nutshikuanits nete etatau. Ume (SOCC) eshi miste animenitakunits shash takunipan etishuetau utte Committee on the Status aueshisha make pineshisha kauikustitshets utte Kanata mauats meu muku SARA mak eipits ne SAR mak SOCC uin katats utte Napuatua kaishishuetau eukun eshi uapatinuetau etantshi aueshisha mak pineshisha nta kauuinats Tables 4.1, 4.2 mak 4.3 tshitinuatakan enkun tsheeka nutshikaunits (\*).

Umenu eshiuauinakanits mak emishinauakanits tan eshinakueshets essi meskuankanits. Umenu tables eukun tsheueueshitakanits ume essi meskakentshi put mak tsheka miskutinikanu eskunte. Mak passe kutakuea tshika uauitamuts ne SARA nenu katetakuau nekatishinikanua nta Schedule 1 mak tutak nte tshekuan tshetutakant mak tshuapatinuanits put kie tshetshi miskutinikant kaishishuenanut nenu eshi uapinakanits ne auaushishats mak pineshishats kaishintussenimakanits. Eukun eiapits tshetshi etuish meskakent ume tsheishinshuenanuts nenu eshiuauinakanits ume aueshishats make pinehishats, eku mak uments SARA put mak tshemiskutinakuau nenu tsheunitkanit tshika uauitamuakanits nenu eanemenitakunits maks EAs mak tshetshi maka tshetshi nakatuenimakanits mak pineshishats etakuau utee Kanata.

Napuatua eshinispishats nashipetamits tsheishinakuats Uaishinakuatakant mishiue etukauats nete tsheishiuauitakant katakuats.

KAINIUIMAKATS ESHINAKUATS TSHEKUAN NETE TAMPEKUTS  
Tshepishum 2022

## 4.6 KASHUKA ESHAPATS TAMPEKUTS NE ASSIN

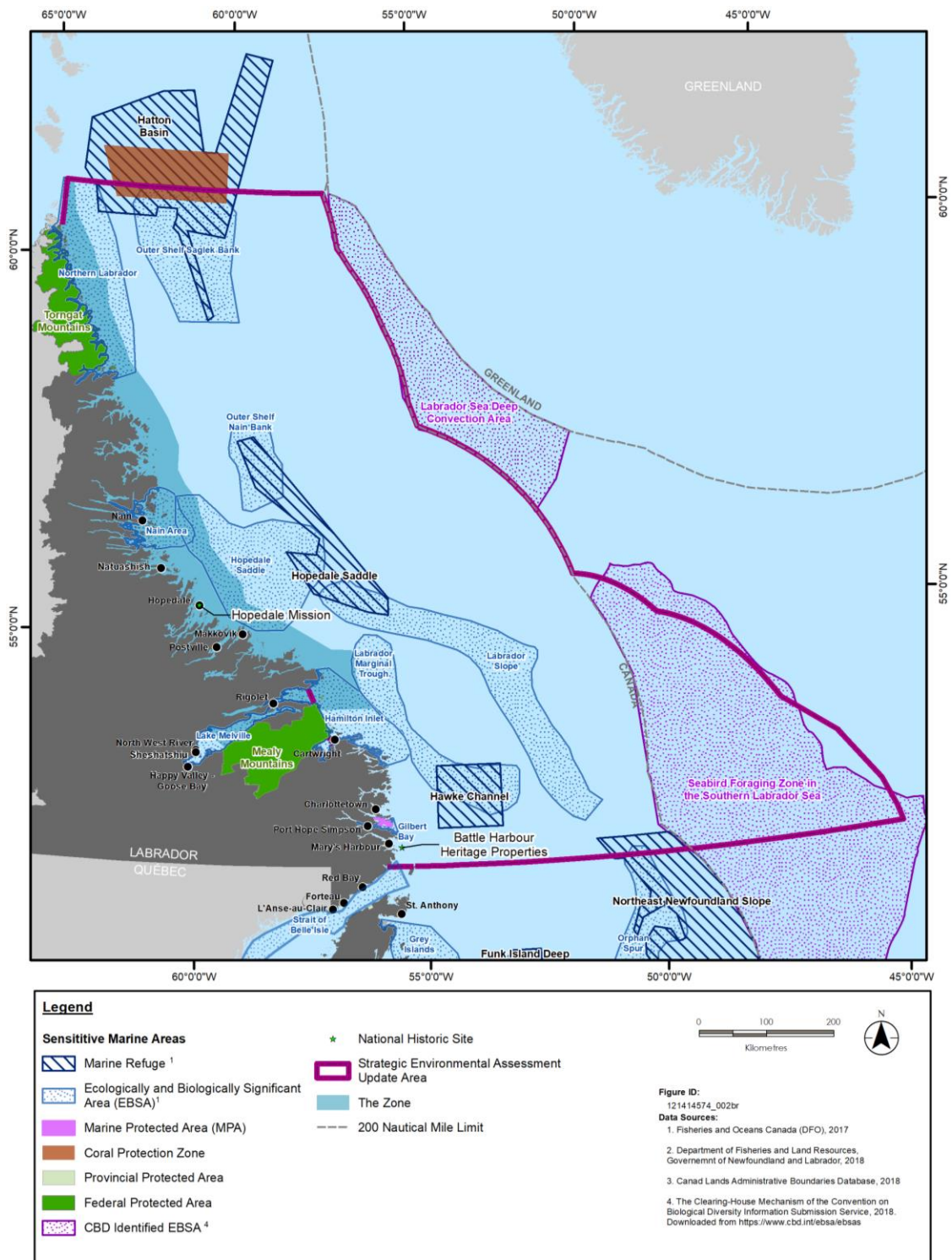
NL takunipan eka nakatuenitakuau uments nenua kaitishuentshi utshimaua enutshi kamintshi assinu, mak nenua kaitishuentshi utshimaua enutshikamintshi nete mishiue assina, mak kutakuts kanutshiakuau eanish assinu, mak kaueuetishuetau mak kamiste ntussenitakuau mishiue tshekuanu eukun tapue miste aianimentakunu uinuau kaishintussenitakuau nenu eshinakunits eishiniuinakanits tshekuanu, nenu ntussenitakuau nenu uipats kaitinanuts mak tshekuan etakuats put kie uipats auentshi uets etakuau (Akunikan 4-1 mak 4-2; Table 4.4).

Kakashuka shapts assin nete tampekuts euauitakant:

- Tante passe tshika animenitamuts ne uinuau tsheutshimau tsheishueat tan tshekutakuau nenu assinu, put kie kaitshuenitshi tsheutshimau kaitishuentshi (i.e., eukun etakunits nenu National Parks, kantussenitkamintshi ekanutshiakanitau, Uinipekuts etukuats kakaiatinikants, nenu Kanatuenitakuau nenua etantshi kaatusentshi nete unipekuts, Neuipats Kantananuts euitshinanuts, Kakusseshuts katats enakatuenitakuau, tshenakatuenitakuau nenua utta tshetshi minukutintshi)
- Eukun eka shuka nitutakuau tshetshi eishiuauitakanits
- Mak ume essi ssenitakant tshekuanu eshiniuimakanits, put kie auentshi essi kanauenitatau nenu tshetshi eka miste pikunikanits mak shuka kastinamuts nete nakatuapatanits nenu assinu put kie kamiste aianimuetakuau nenu essi takunits umenua (e.g., corals; kapistinakuau nameshits nete utuashimitau, nitautshit kaiapishissits namessats, tshenitutshits aueshishats, put kie tshemamu takuau, nash meshants tshemiste nitautshikuau, kaniuimakunits katats aueshishats kamiste nakatuenitakanits tshekuanu kainiuimakanits nete tampekuts mak nenu eishinitautshinits nete assits tampekits nenu essi shapanits (EBSAs), emiste nitshiuapatakuau tshekuanu enutshiakuau (SBAs), mak miste entuapatikan tshekuan nenu essi inniunanuts)

Napuatua eshinispishats nashipetamits tsheishinakuats Uaishinakuatakant mishiue etukauats nete tsheishiuauitakant katakuats.

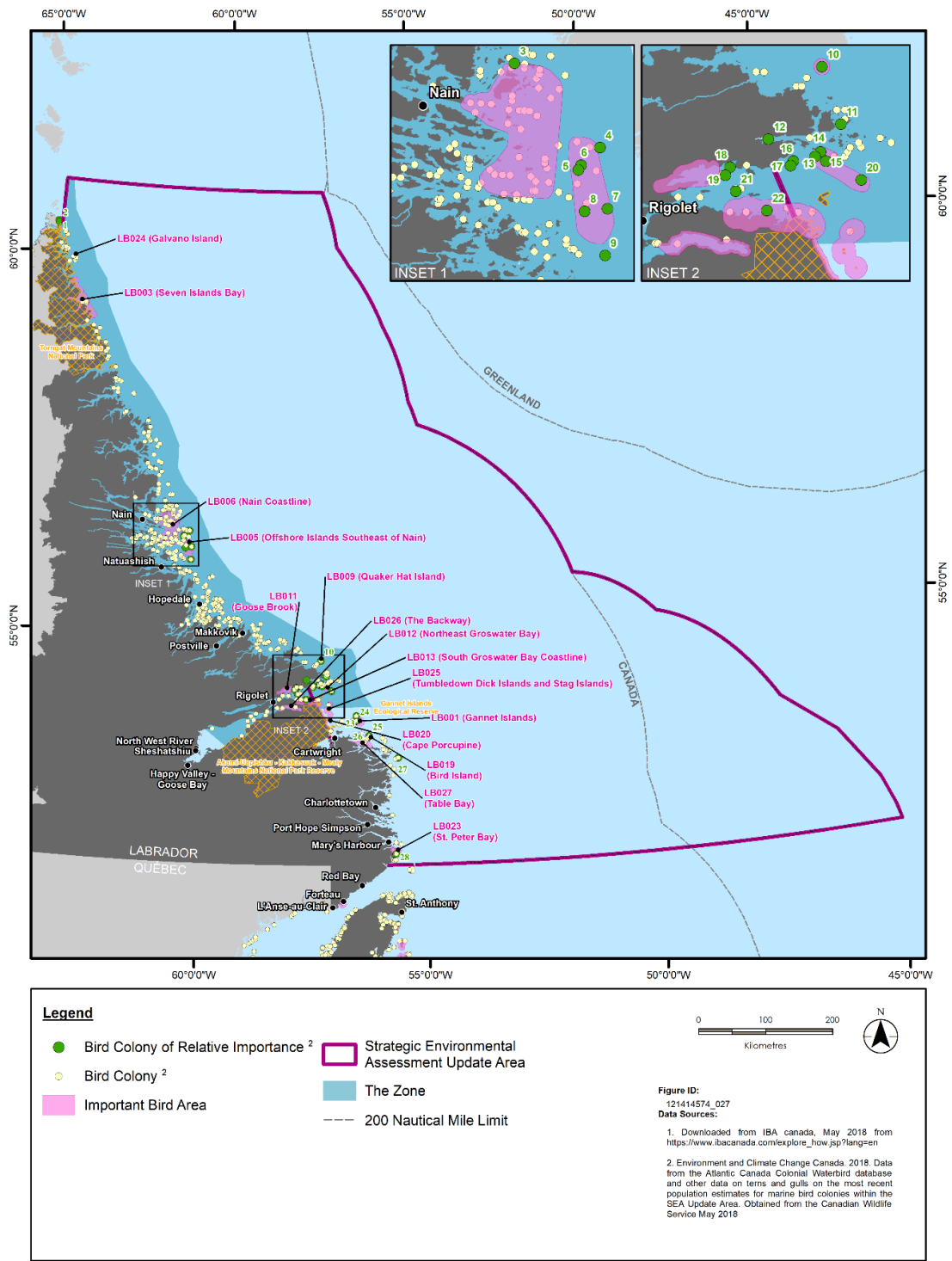
KAINIUIMAKATS ESHINAKUATS TSHEKUAN NETE TAMPEKUTS  
Tshepishum 2022



Akunikan 4-1 Kakashuka shapats assin utte Napuatua tampekuts etutakant

Napuatua eshinispishats nashipetamits tsheishinakuats Uaishinakuatakant mishiue etukauats nete tsheishiuauitakant katakuats.

KAINIUI MAKATS ESHINAKUATS TSHEKUAN NETE TAMPEKUTS  
Tshepishum 2022



Akunikan 4-2 Kashuka Eshapats Tampekuts Pineshishats Assinu Mark Pineshishats katats nete uinipekuts etats

Napuatua eshinispishats nashipetamits tsheishinakuats Uaishinakuatakant mishiue etukauats nete tsheishiuauitakant katakuats.

KAINIUI MAKATS ESHINAKUATS TSHEKUAN NETE TAMPEKUTS  
Tshepishum 2022

**Table 4.4 Kakashapenitakuau tampekuts eshinakuats ute Napuatua kauintussenitakanits**

Tan eshinakuat eka shuka Shenapats	Tante Etakuatshi
<b>Tante assits euaitakantshi</b>	
Kantussenitakanits eshiniuimikats tshekuan mak eshintussenimatau tshekaunu enitaushinits nete ekashuka shapanua nenu assinu	<ul style="list-style-type: none"> <li>• Northern Labrador</li> <li>• Outer Shelf Saglek Bank</li> <li>• Nete Nent Naneu</li> <li>• Nent Mitshima</li> <li>• Pupitent Etshissekaunakunits</li> <li>• Napuatua enekaunukuanits</li> <li>• Napuatua ekaunipeats</li> <li>• Hamilton Inlet</li> <li>• Lake Melville</li> <li>• Gilbert Bay</li> <li>• Orphan Spur</li> <li>• Southern Pack Miskumi</li> <li>• Strait of Belle Isle</li> </ul>
Kaishiinuistupatakau nete tshekuan enutshiakant	<ul style="list-style-type: none"> <li>• SBAs eukun kaishinuistupatakau nete Napuatua SEA kaishishuetau nenu essitshitapatakunits eapishashint tshekuanu mak emamishantshi nenu gorgonian corals kaishinakunitshi</li> </ul>
Kakauinutshiakau	<ul style="list-style-type: none"> <li>• Haw ke Channel</li> <li>• Pupitents Saddle</li> <li>• Hatton Basin</li> <li>• Northeast Newfoundland Slope Closure</li> </ul>
Kakustanuts etaiants mak uipats etananuts	<ul style="list-style-type: none"> <li>• Torngat Mountains National Park</li> <li>• Akami Uapisk National Park</li> <li>• Pupitents Mission National Historic Site</li> <li>• Battle Harbour National Historic District</li> </ul>
Atussenanuts Kamiuimiste Nskstuenitakant	<ul style="list-style-type: none"> <li>• Uments auents kutakuts kaatusseshuts kamiste kanatuenitakuau nete etatau mak utte uinuau katats uments Tornagat Mountains park kaishinkatets</li> </ul>
Emiste tshenakatuenitakant	<ul style="list-style-type: none"> <li>• Gilbert Bay</li> </ul>
Kuestetshe etakunitshi	
Mak kuestetshe etakunitshi	<ul style="list-style-type: none"> <li>• Gannet Islands Ecological Reserve (akunikan 4-1)</li> <li>• Kaanimentakunits pineshishats katats (akunikan 4-2)</li> <li>• Internationally Identified EBSAs (akunikan 4-1)               <ul style="list-style-type: none"> <li>○ Unipek pineshishats katats tshetshi ntumeskatau umitshumuau utte Nanim Napuatua</li> <li>○ Napuatua kamiste temints kamitshetinanunts kaiatussenants</li> </ul> </li> </ul>



Napuatua eshinispishats nashipetamits tsheishinakuats Uaishinakuatakant mishiue etukauats nete tsheishiuauitakant katakuats.

KATUTAKANTS MAK TSHEUITUTAKANT MAK AUENTSHI KANUTIMESHETS  
Tshepishum 2022

## **5.0 KATUTAKANTS MAK TSHEUITUTAKANT MAK AUENTSHI KANUTIMESHETS**

Ume essi uauitakantshi etutakant atusseuna mak kamiste tananuts mak kutakuts auentshi kanutimeshetau eukun miste animanitakununenu etutakanits utte Napuatua. Atusseunu mak tsheuitshintuananuts tsheishi uapatinuanits tsheishinakunits uments kanutimeshetau nete tshetatau mishinau kamiste animentakunits etakunits nete Nfld mak Napuatua.

### **5.1 KATUTAKANITS ATUSSENANUTS KAMISTE TANANUTS MAK KATAKUTS AUENTSHI KANUTIMESHETAU**

Ume essi uauitakantshi etutakant atusseuna mak Kamiste tananuts mak kutakuts auentshi kanutimeshetau eukun miste animanitakununenu etutakanits utte Napuatua atusseunu mak tsheuitshintuananuts tsheishi uapatinuaunits tsheishinakunits, uments kanutimeshetau nete tshetatau mishinau kamiste animentakunits etakunits nete Nfld mak Napuatua

DFO eukun kamiste aiatinikauau nenu entumeshananuts, tante tshenutimeshenanuts mak tshetshi kastinakanitshi eshinakushintshi namesha utte Kanata muku kakustinets, mak nete 200 nautical mile espishats tshetshi essi nutimeshenanuts. Napuatua SEA kaishishuetau eukun astitshitumupants nete Northwest Atlantic tshe nutimeshenanuts 2GHJ.

Nta tetauts epupunits 2011 mak ispish 2017, eukun Napuatua tshetshi nashukupinitatu nenu 41 percent, nash espishantits 60,842 t nta 2011, mak nash ispishanits 36,000 t nta 2017. Eapits miskutshipanipan nte tetauts 2011 mak 2017 mak niskupanu 9.5 percent. Nta 2011, eukun essi animak utte Napuatua SEA kaishishuetai eukun tshekat espishats ume \$159,043,486, essi shuneaut mak nta 2017 eukun espishats muku ume \$174,155,728 essi shuneaut.

Ume utte Napuatua SEA kaishishuetau, eukun emiste nutshiakanitshi nenua namesha nete nash natikam eukun uments nameshats eshinakushets eutinakanits northern shrimp mak groundfish species ne Greenland miste pepekatishu, kamikushet namesh, ueushu mak kutakuts aueshishats etakuau nete tamatum eukun Northern anishueskashu, snow crab, shushashu, whelk, mak and Icelandic scallop.

Atshukuts eukun enutshikuanits utte NL mak eukun Napuatua SEA kaishishetau nete eiapits katananuts. Hooded atshukuts kaishinakushets mak Harp atshukuts kaishinikashets eukun emiste nutshikuaukanits tshash mak kanutimeshenanuts eukun etutakant nta nuteniakanits na Tshepishum nispish Pishumuss, shakunitshi miskuminits esk eka minushintshi (Shiship Pishum- Nispish Nissipishum).

### **5.2 KANUTIMESHETS NETE ETAKUUAU UTASSIATS**

Mishiue auentshi kanutimeshetau mak kantutautshets namesha kanutimeshets kaukanumits mishiue katats utte Napuatua katananuts Ume Nunatsiavut tsheutshimau uinuau kauikanumits nenu kakuskatakuau kauikanumits groundfish, mak etitshimatau nenua Greenland miste peptatishu. Eukun



Napuatua eshinispishats nashipetamits tsheishinakuats Uaishinakuatakant mishiue etukauats nete tsheishiuaitakant katakuats.

KATUTAKANTS MAK TSHEJITUTAKANT MAK AUENTSHI KANUTIMESHETS  
Tshepishum 2022

eipits ukaminanu tshenitshikuakanits neatshukuts, scallop, snow crab, shrimp, mak shushashu. Innu Nation passe muku ukanumits tshetshi kastinakuau nenua groundfish, makanu, capelin, shrimp, mak keskemekush. Mak ne Mikmak eukun katats utte Nfld eukun eiapits uakanumupants muk pepemau eshinakushintshi namesha uets kastinakuau utte Napuatua. Mak ne utshshumekuts kanutimeshenanuts eukun NunatuKavut uets eishiniutau mak ne tsheutshimau eminuets tshetshi ukanumitau umen NunatuKavut mamu attussekuau mak eiapits enutimshetau *Fisheries Act*.

### **5.3 AUENTSHI KANUTIMESHETAU**

Eukun mitshima katakuau nete Napuatua SEA kaishishunanuts etaianuts mak napitshi ma tekuatshishi eukun tshika uitamuakanits nta tshenutimeshets, mak auentshi uanutimeshets nenua ueushua. Mak minuau tshetshi ukanuminants nutshimeshenantshe. Muku auentshi kakussets eukun tinapuetuakanits mak muku tshetshi ntutauatshetau. Passe kashuka miste nutshimeshets utte NL eukun kastinakuau kauapishintshi, utshashumekua mak natamek. Ume kaiapishishets eukun ekuskatakanits muku peik pupuna, tan espish eshikastinakanits, utshashumek mak natamek muku tanta uakastinakanits nenu peik pupuna, mak tante shipuna ekuskatakanits nenu epupunits.

### **5.4 AUENTSHI NITMUK KANUTIMESHETAU TSHETSHI KASTINAKUUAU NENU MITSHIMINU MATINUETAU MAMU, MITSHUNANUTS NETE ETANANUTS**

Auentshi kaunutimeshet, eukun utts kukanumutshi mak uets kusetau tshemitshiminu etapitshiats eiapits kastinatau tsheashamuets, mak mamuitunanuts emitshunanuts (FSC) kukanumits eukun uets tutakuau utte Napuatua SEA kaissishuetau.

Nenu Nunatsiavut tsheutshimau eukun nishuets FSC ukanumipants enutimeshets eukun enutshikurtau matmek, utshashumek, shushashu, kauapishist mak atshukuau. Eku mak Innu Nation ekanumitau FSC uments Sheshatshiu mak Natuashish eukun uninau kenastinatau utshshumekua, shushashu, ueushu, tamikats, kauskanust, scallop, whelk, kaiapishits mak atshukua. Mak ume utshashumek etshipanikant utte Napuatua, eukun nenu utshashumek eukun kanutshimeshetau muku.

### **5.5 KANUTIMESHETS UANTUMISKATAU**

Ume Kanuseenitakuau nete nipits nenu uets tutaknits eukun tshika tapats utte Kanata NL kaatuskanits. Ume kauintussenitakuau eatussenanuts eukun uinuau DFO kanutshikuats, namesha, nenu essi nispishants 200 espishinakunits nete utts Kanata essi nishinakunits. Ume DFO kanutshiuats namesha eukun eishi tshitapatakuau nenu eshinakunits tan tshenispinit enu euantussenitakuau tan tsheishi nutshikakanits nete etantshi kanutimeshentshi. Ume uatumiskakanits eukun tshetshiu apatshitakant mak tshetapuetikanits nutshitakantshe utte Kanata NL kaatussenanuts. Eiaputs tshika astitshitakanu tshetshi uaitamatunanuts, mak uets ntussenitakanits nete uttits mak takunu nenu eshinakutakanits nete utts EBSAs and SBAs nete uinuau kantussenitakuau tampekuts tsheishinakunits mak mishiue shash eapatshitakantau tsheishinakunits mak apatshitakanits mishiue espitaskamikanits assinu.

Napatua eshinispishats nashipetamits tsheishinakuats Uaishinakuatakant mishiue etukauats nete tsheishiuauitakant katakuats.

AUENTSHI TSEMISTE APATSHITAKUUAU UINIPEKUTS KETAUTSHI  
Tshepishum 2022

Shash mistshet pupuna etutakanits essi ntussenitakanits utte mishiue Napatua katutakant shash tsheishinakuats mak nete tampekuts utte Napatua uinipekuts shash miste skutamashunanipan utte Napatua eukun mamu atussetau be Nunatsiavut tsheutshimau.

## **6.0 AUENTSHI TSEMISTE APATSHITAKUUAU UINIPEKUTS KETAUTSHI**

Ume essi auentshi nutimeshetau eukun eshi nakatuenimitau, mak nenu enutimeshetau (eukun tshika uauitamuakanits etukuats (eukun tshika uauitamuaknait etukuats 5.0) mak Napatua SEA kaishishuetau mishiue tutakanistshe.

### **6.1 NENU ETAKUUAU ENUTIMESHETAU MAKE PEIKUNUTS MISHINAU NETE UINUAU ETATS ENUTIMESHETS**

Napatua auentshi katats utte eukun eishi uipats eishiniunanuts. Eukun eapits eapitshitakuau nenu assinu. Utte Napatua Innu mak aissimeuts eukun uets enu eshi nutshitakuau essi enitau, uipats enu umitshua. Uets eniuts mak emeatshtakuau. Nenu mitshiminu mak eiapits eishi eapatshitakuau etatui entuiut, emanekushutau, entumiskatau mitshiminu eukun etakunits muku utte Napatua SEA kaissishuanuts.

#### **6.1.1 Innu Nation**

Nenu etatishitau Napatua Innuts 3,200, eukun etats Sheshatshiu mak Natuashish. Innu Nation utinamupants tshetshi utinakuau Napatua mak passe nete Quebec. Nta Uskaupishum 2008, Innu Nation mak tsheutshimau utte NL uinushupanne Tshatsh Petapan etapuetakanits. Ume Tshash Petapan etapuetakuau shash miste essishuaunutshi mak Innu Nation Provincial nenu Innua uttasinu mak nte uin Innu Nation mak Provincial make Federal kutak tsheutshimauts shash tshishitapants nenu etapuetau nete Napuatau Innu assinu kauitishuananits nta Nispish 2011. Passe utte Napatua Sea kaishishetau tshetshi mamu istitshimatau kutakua aeshisha tshetshi ntuiutau eukun atshuka, pineshisha etantshi nete uinipekuts mak etantshi nete uinipekuts nenua; ueushu, utshashumek, northern shrimp, mussels, clams, sea urchins, mak whelks; entuiunanuts kamamishitats auenshishats enukun atiuk, mush, mask, mak matsheshu, ntshuk, make uapistan. Nenu mak mina kie entapatshitapanitshi nenua entautshinits uapukuna, eukun mistukua eshinakushets, uskateapina, uapukuna, assits enitautshik, kauapamiskats, assin mak ashinits kanitautshik neassin. Mak nenu essi eapatshitakuau assinu ekun epimpapints (nenu utta, utapanissinu epampatakuau, epimitekuau, epapmiskatau) mak eukun eiapits menantshekuau nenu uipats kainitikuau mak nete utts uipats kanakatakanits mak eiapits tante eniuitau, mak enikuaskatakanits enipitshi auenua, enipintshi auenua mak menanikanuts, eukun mamu kamamuitunanuts emitshetinanuts mak uipats kauitshinanuts, mak kushapatshikan katutakants etananuts.

Napuatua eshinispishats nashipetamits tsheishinakuats Uaishinakuatakant mishiue etukauats nete tsheishiuauitakant katakuats.

AUENTSHI TSHEMISTE APATSHITAKUUAU UINIPEKUTS KETAUTSHI  
Tshepishum 2022

### 6.1.2 NunatuKavut nete Utassiuats kaatussetau

Nunatukavut mamu kaatusseshuts eukun unapatinuets etatishikuau essi 6,000 aissimeu eukun etakuau nete eanish mak tetauts Napuatua. Nunatukavut mamu kaatusseshuts eukuu tapants utte Napuatua Metis nta 1985. Eku etnitakuau nenu assinu essi tipenitakuau, eukun utte mamit mak tetauts Napuatua. Uments eipits utte Napuatua kaishishuetau eukun eiapits tshetshi kastinakuau nenua astukua, kuekuatshess, niskats, ueuinikuteuts, nissipats, shishipats teals, aiapiniss, turrs mestashuk, sleepy divers, white winged scoter, bottle nose driver, surf scoter mak scaup. Mak utt Napuatua SEA kaishishuetau eukun eiapits entuiuuau nenua atshukua, kuekuatshess, niskets, ueuinikuteuats, nissipats, shishipats, aipainiss, mestashuk, sleepy-eyed divers, white wing, bottle nose, kuaikan, and lesser scaup, utshashumek, natamek, shushashu, kaiapishist, ueushu, keskemekush, kaushkanusht, makanu, mak esh. Atiuk, mush, mashk, pineut uapush, matsheshu, kauk, utshask, pishu, atshikash, mak menike etat nete kuestetshe nanim Napautua. Mak eiapits nakatuenitamapatns nenua nitautshiatakua tshetshi untukuminats, mitshiminu, mitta mak kutakunu tshekuanu. Nunatukavut mamu kaatusseshuts mak eiapits entuiunanu eshakuatshi nenu pineshisha mak uua emauatshitatau mak kutakunu mitshiminu kastinkuau mak eishiuauinakanitshi nenua pineshisha eshuku, pupuna eukun shishipats, niskets, mak tshinask uua eukun miste amauatshitauts mak ama shuka ntussikateuts nenua turrs, mak tshetshikutshuts uuaumuua. Ume Nunatukavut mamu kaatusseshuts eukun eiapits miste apatshitakuau mak unipekunu. Mak utapana, utapanissa, utta, mak epepamitekua, atunmua mak eutishamikuau mak passe enkun emantshekua, enatshukessetau nete mishinau kaitshitau put kie tshekitshitshetau katats nete mak mitshuapinu kamantshetau tshetshi apatshitakuau utishunuua enutshikatui. Kutak apatshitauts tshetshi mamuitatau, uipats kaitshinanuts.

### 6.1.3 Nunatsiavut Tsheuatshimau

Nunatsiavut tsheutshimau eukun 7,000 etatishits Napuatua aissimeuts mak petatsh etatinikuau utenaua: Nent (Nunainguk); Pupitents (Aqvituq); Makupik (Marruuvik); Pustpin (Qipuqqaq); mak Euinuats (Kikiak). Napuatua aissimeuts etipenitakuau nenu assinu 15,800 km<sup>2</sup> espishashits utte Napuatua aissimeu assimu. Mak mishiue eishintuiutau tshekuanu etukunits nete uinipekuts, uua entuuautau, enkun estitshimitau nenua, nisk, missipats, kanipashiu shiship, passip, kuishkushipatam, kuaikan, mak kussenanuts, utshashumek, shushashu, ntamekm ueushu, tamikat, keskemeskush, kauskannust, mak umamuk; mak nash nashipetamits etantshi pepekatishu, goundfish, kamanikanenakanit, mussels, scallops, whelk, mak sea urchins, entuiunanuts enipatau eukun mistapush, uapush, pineuts, kauk, uapistan, pishu, matsheshu mak menikets, mak entumiskatau kaminuakamints nipinu, nitautshitakea, mitta mak mina emushutau mak espikashumunanits make epepampinanuts. Emenu katananuts uinipekuts mak etunants nete assits mishiue eukun uetshapinits utiniunuau uets uts utinakuau mitshiminu, eshuneanits tshekuanu mak uesh iniunikunits. Nenu eiapits epapampapintau uttinu, utapanissinu epapampatakuaeukun eiapits tshitapakanipan nenu animenitakunits ume Napuatua aissimeuts essi apatshitakuau nenu etutekaunui mak epepampitau mak eshinakunits tsheshukunu mak miskumina eshinakushintshi. Eukun kamiste ntuiut auen ekussenitamupan tan uaitutetshi. Mitshetuts Napuatua aissimeuts mitshenipani nenua ette menantshetau enkun mushinau eapatshitakuau, entuiutau,

Napuatua eshinishpishats nashipetamits tsheishinakuats Uaishinakuatakant mishiue etukauats nete tsheishiuaitakant katakuats.

TAN TSHEISHINAKUTAKANT MAK EUAUITAKANT TSHETSHI ISHITUTAKAT  
Tshepishum 2022

enutimeshetau, entuiutau, enutimeshetau, enatshimushutau, entshutuets. Passe kutak nenu assinu eunkun enatshimupistakuau nete uipats katananuts.

## **6.2 KUTAKUTS EAPATSHITAKUUAU NENU UINIPEKUNU**

Uments auentshi eapatshitakuau nenu uinipekunu eukun kapipampanitau mak auentshi kapipampanits kapepamutekuau meshikataui auentshi nta uttits, kamuupitau meshikataui nta uttits, mak nutshimits Kauauapatakuau, nenu assinu eshinakunits, akuaiashutam, kapepamautats tshekuana, kamamishatshi utta nete uinipekuts, pimiut utt kaniuetshimautat tshekuana. Kaistishineauets mak kaikuaspinits nete natekam, pimiut kanutshikuakant, utta uipats kapikuaiatshi mak uinipekuts katutakant tshekuan,

## **7.0 TAN TSHEISHINAKUTAKANT MAK EUAUITAKANT TSHETSHI ISHITUTAKAT**

Ume kaishiuaitakuau ume SEA eukun tshika uauitshieuts nenua C-NLOPB tsheueuetenitakuau tan tsheetshi uinishinakutanits utte Napuatua kantutussenanants mak tan tsheishinakunits tshekustianits nete espishants uanutshikuakant ume pimi mak kutak epimiutshi tshekuan.

### **7.1 TSHE ISHINAKUATS TSHEUUITAKANITAU**

Nenu emitshetikuau euaitakant uets tutakantshe ume pimi eatussenanants utte Napuatua SEA kaitishuetau eukun takuats nete eka shuka takats, nenu essi meskatau nenu eshinakunits tshekuanu mak tshetshi etuish takunits. Nete tetats eka shuka takanits. Nenu mak tshetapitats nenu mamu kaishiuaitakanits utte (Section 7.2); eukun mak tshitapakanits mamu tan tsheishii tshishipintakuau atussenunu make tshetshi uaitakuau tan uaishi itutaknits uaitakuau tan uaishi itutakanits ume uaitamuakantaue. Ume tsheishinakuats tsheuaitakant eukun pimin uamiste nutshikaukant mak tante essi miste uaitakantshi:

- Tsheuinakatuenitakant enanunitakant tshekuan eukun kapukuntshenanut, nipi kamiste apatshitakant, etutakant nipi eastakant euinakamits nipi, nipi kauts stapautshitakant ne uttits, nipi euishikuekuuts nete uttits, eapuakamitets nipi, euapinenkauts nipi, eshissuakanits nipi, nunits, metshapusiu, ekueskutshikut, tauts apatshitakuau enitautshits aueshishats, kanutimeshets katats mak tetukuats eshinakushitau aueshishats nete.
- Mak mishiue tshekuan uantussenitakant nete nipits etakuats utte Torngat Mountains National Park eukun tsheishi uinishinakuatats uinuau aissimeuts kauinakatuenitakuau nete enutshikakanits uinipekunu mak nenua utta kamamitshantshi.
- Tsheminu nututakant tshekuanu etutakantshi mak tshentussentakant nete tampekuts ume assin, mak aueshishats katats utte unipekuts, eukun uapuskuts, sea missinak<sup>u</sup>, uinipekuts, pineshishats, tshekuan enitautshik nete kutakuts aueshishats etats nete tamatum.
- Minuenitetau tshetshi mushinau tatau uments uinipek pineshishats mak nenu epukunentshenanants mak nenua utta epipapintshi kapushitashuts kaiskuitatau mak kamamishatshi utta.

Napuatua eshinispishats nashipetamits tsheishinakuats Uaishinakuatakant mishiue etukauats nete tsheishiuaitakant katakuats.

TAN TSHEISHINAKUTAKANT MAK EUAUTAKANT TSHETSHI ISHITUTAKA T  
Tshepishum 2022

- Kanutimeshetau etakuau, mustinmauakanuuts tshetshi eka takau nete.
- Kaishinakushitau aueshishats nete tampatum tamits assits katakuau enkun ume hard corals eukun tsheka uieka pikupitakanits etatau mak uets meskatau nenu uishimitshits.
- Tsheeka ishinakuats tshetshi tetauts nataumikatshi mak tsheui ishinakatenitakanitshi nenu utta kamamishatshi mak eiapits etatau aueshishats katats (nash miste nakatuenimakanits)
- Tsheeka shuka mista aiatinikants nete mak kaishiniutau auenshishats eietispinikau, etuassimitau mak kapautat uauumuaua
- Tsheeka mishats enitautshits tshekuan nete etutakant ume enutshikuakant pimiut etutakant ume enutshikuakant pimiut eatussenanuts mak tshetshi nakatuenitakantshi nenua katakuts auentshi (put kanutimeshets katatau, utta nenua kapepapinitau mak auentshi kapapamaunakanits mak eiapits kutakauts auentshi kaapastatau euitshitau).
- Mak tsheuinakatuenuitakant enanuuiutakant tshekuan eukun kapukuntshenanuts, nipi kamiste apatshitakant, etutakant nipi eastakant, euinakamits nip, nipi kauts staputshitakant ne uttis nipi, euishikuekutshuuts nete uttits, eapuakamitets nipi, euapinekauts nipi, eshissuaukanits nipi, enipitshi kauts staputakant euinakanunits, metshapisu ekuekutshikuts tauts apatshitakuau enitautshits aueshishat kanutimeshets katats mak tetukuats eshinakushitau aueshishats nete.
- Nakatuenimakanuts ume pineshishats tshietshi nepanikuts, tampenkuts katats emamishitikuau aueshishats, sea missinak<sup>u</sup>, aueshishats kakauskanuuts, katats, nemeshets mak aueshishats eishintuishits, mak tetukuats eshinakushitau aueshishats.
- Nenu tshetshi etuish nutshikuakant pimi mak kapumiuts tshekuan, tshishuk eshinakuats, ematshishikats, miskumi kamamishitikuau, eapishishats miskumi mak kutak tsheka minupanits.

Ume essiuaitakanitshi eukun mitshena tshemiste tsheishinakunits nenu tshessiuaitakuau eukun uments uinuau Napuatua SEA kaissishuteu tshetishi uapatakuau tsheishinakunits :

- Tsheishinakuats ne kakshuka shapentakuats ne eelgrass beds, miste natikamepints make emiste nekata hasteu nenu tshetshi enu nanuinukuts mak eukun eshinakushitau pineshishats (eukun SAR estatshitikuau)
- Animanitakuau nenu aueshishats etakuau mak enitautshikuau utte Napuatua SEA kaishishuetau eukun kauipatshitakuau pineshishats mamu katakuau, nenu uets ustinikuau mak etakuau pepunitshi
- Mak uments coral kauimiste nakatuenitakunits Katakuau, utte Napuatua SEA kaishishetau
- Mak tsheuimiste tshuinakatuenuitakanits nameshats euahutau mak nete tshetakuau tshetshi eka nekapiniuts utte Napuatua SEA kaishishetau ette etantshi mitshima Hamilton Bank-Hawkes Channel mak Gilbert Bay
- Miskumi eshinakust (miskumi kapapamukushint, kanamiste pikuapanitau kamamishits miskumi) mak uments miskumi eukun emiste tsheuainakant utte Napuatua SEA kaishishuetau etananutshi eukun tshitshue ua tusenumatau tan eshipimakushint mak tan tshessiuaitakant nenu epukuntshenanuts eiapits.
- Tsheishinakatuenuitakant tan eshinakuats tshishuk essi miste miskutshipant nete eshinakuats subartic kaishuapamakant ne miskumi enishpint utte Napuatua SEA kaishishuetau nenu essi tantshi aueshishats mak aueshishats emiste apatshitakua eka tantshi miskumina eukun mishinau uets utiniunua eatakunits

Napuatua eshinispishats nashipetamits tsheishinakuats Uaishinakuatakant mishiue etukauats nete tsheishiuauitakant katakuats.

TAN TSHEISHINAKUTAKANT MAK EUAUTAKANT TSHETSHI ISHITUTAKA T  
Tshepishum 2022

- Eukun mishiue tananuts tshetshi eka (nanuakanit pimi) nete eka shuka mishiti miskumi
- Nistuets ishinakushu wolffish euauinakanits ume SARA emiste nakauenimatau etantshi utte Napuatua SEA kaishishuetau etananuts, eukun unapamakanit eshinakust etatakuau nete mamit make spotted wolfish etat
- Tatina etatu ume pineshishats emiste animenitakunits muku Gannett Islands ekanakuenimakanitau utte Napuatua SEA kaishishuetau nete etananuts  
Etapuetakuau utte Napuatua Innuts mak aissimeuts nenu utta tshtakunitshi nete mamu tshemiste minuenitakuau uatutakuau mak tsheapatshitakuau emenu Napuatua SEA kaissishuetau eukun tante ienispinits epepapintau, etuiutau mak emamuitutau mak etutakuau nete etatau tapitu.

## 7.2 TSHENISHINAKUATS NEEKAKAMESHKAKANTAU

Esk takunitsheni tutakua ekakameskakanatau eukun tetauts etakuatshi utte Napuatua SEA kaishishuetau eukun kaishiuauapatau etakuntshi uments VCs mak etakuntshi nenu uaishishetau mak tshetshi mamu uapatakantshi nete SEA tshetshi uauitakuau mak miste tshika uauitamits essi meskatau nenu eka istitshitakanits utte mamu:

- Eukun tshetshi miste esk apu uauitakanu nenu eshi essinitakant ne essimeskakent utte etakuats
- Make miste tshika ntusseninimakanu Benthic aueshishat mak tshekuan enitautshik nete tamatum, eaipits tsheuinukutakant, nenu essi mitshetikauau aueshisha mak tan eshinakushitau
- Mak tshetshi etuish tshissenitakuau tan essi mamupanits ume nameshets mak Kamanikanenakanit euauuts mak nenua eshinitautshikuau
- Essnitakanits eaipits tante uments unautau mak kutakuts aueshishats enitautshitau nenu enkuts kakauskanutshi, mak kutakuts nameshats eshinakushets
- Eukun eaipits tshika uapatinuau tante tatau enuautau uments nameshats eshinakushitau mak pineshishats etatu mamu uets utinakuau umitshimuau mak nemeshtats kamamishitats katats utte (e.g., Hawkes Channel)
- Eukun mak tsheishinakutakant nenu tshe mamupintakanits tshetshi essi meatshitakanits ume mak tante eishi iniutau enitautshik ument corals, sponges mak bryozoans
- Tsheishinakuats neekakameshkakantau eukun tshetshi meatshitakuau nenu aueshisha nenu eshi nitautshinkuau mak kaishintussenitakanitau uments mishiue eshinakunitau mak tampenkuts kapapampinits nameshats kamamishitikuau. COSEWIC eukun kamiste ssenimatau mak nenua kutakua etantshi aueshisha
- Nenu eishi uitshitapatakant neeka shuka mitshetinanuts etaiants
- Eukun eaipits tshetshitapatakant uments SARA's kakustitshetau tshetshi eka aiatinikanits nete, mak katakua aueshisha etatpitu emamupuniuntshi
- Mak eaipits tshetshi ssenimakanitau tanta aueshishats etatpitu etatau eukun mamu ueshiniutau enitautshikuau mak utinakuau tshemitshikuau uments aueshishats uinipekuts katats mak uments sea missinak<sup>u</sup>
- Tshima minuetau mak tan etatishinikuau nenu etta essi emitshetnikuau nenua pineshisa etatishintshi uments (uinuau SAR) mak ama shuka uipunitauts mak tsheka uipats punitakakuau nenu uaishintussenitakuau

Napuatua eshinishpishats nashipetamits tsheishinakuats Uaishinakuatakant mishiue etukauats nete tsheishiuauitakant katakuats.

TAN TSHEISHINAKUTAKANT MAK EUAUTAKANT TSHETSHI ISHITUTAKA T  
Tshepishum 2022

- Nenu tshenishakunits kameskakatau nenu uaishintussenitakanits tampekuts tshenishinakunits mak nenu tsheishimenuiniuntshi eintussenimakantshi nenua namesha, mak nenu menuskakuts eshinuituau, enitautshikuau nenu eshi uauits, tan espitikuau tan eshinumeskatau nenu tshemitshikauau mak tan tsheishiuauitamatshetau
- Muku uments DFO ama minuepants nenu essenitakuau tshekuaunu
- Nenu kashuka uiminuents tshika esk nukunu nenua kamutimesheshuts, mak uments kamiste apatshitakuau ne kanutimeshetau nete
- Nenu essiuepinakuau tshekuanu (tante, tanta, tan espishats tshetshi utitshipanits nete nashipetamits) nenu pimi enanuakant eka tshenitakant; mak tsheishinakuats neekakameskakantau utte SEA kaishishetau (nenu pimi essi kananuiakant mak shuka tshimukuankant mak pimi essi meskuakant eukun tshika miste eutinikanits tan eshi pukunenikant mak tan espish tutakanit)
- Nenu essi ntussenitmakant nenu pimi essi eka enanuuiakant nenu essi mishants enutshikuant, uekun etakuats
  - Mak ama shuka tukunipan neu ekatat nete miskumina epapamakushintshi (DeCola et al. 2006)
  - Enkun apishashipan tshetshi ntutauanikant nenu essi apatshitakant utte eatussenanuts eukun tante emishitit miskumi etat mak essi emishats nipi mak tshetshi tshetshiue nutshiakant

Ument uaishinakuats uaminushitakant tutakant esk eka punitakanits, eukun nistam tshika uauitakanu mak tshissenitakanu tshetshi uauitakant esk eka punitakant, eukun shash miste mitshen emeskakant ume uaishinakuats tshe mamupitakanitshi nenu tshekuan essi uauitakant mak tshika miste nukuakanu euauitakantshi. Nenu essi uaishinakuats eukun tshetshi miste nukuats tan eshi miskakanits tshekuan utte Napuatua SEA kaissishuetua eukun tshetshi nistutakanits. Animentakun tshetshi uauitakant tan eishi takuats neekakameskakant ne tsheuauitakant tshemmupitakanitshi nenu eishi uapatinueanuts mak tan tsheishinakutakant.

### **7.3 TSHEMISHINANIKANT UME TSHEKUAN EKAKAMESKAKANT**

Nenu eshi kakameskakant tshekuan eukun mamu tshika uitutakanu tshetshi uapatiniakant ne tsheutshimau tan tshetutakuau, tshetshi eiapits atussetau nenu tshetshi eka nekanukuts nenua tsheutshimaua tshemiste atuskatau mak tsheuapatinuats nenu tshetshi tshiuatuskatakant tshikatutakanu nenu essi uinutshikuakanits pimi mak epimiuts tshekuan nete eatussentanuts. Passe etutakant eukun tshika uauitshinuets tshetshi mishinanikanitau nenu eshishuenanuts eukun ume mishinanikanitau nenu eshishuenanuts eukun ume tsheuauitanitau nenua:

- Nenu essi meskakent tan espeshanuts mak tanespish essi uahutau nete etataui mitshima makamanikanenakanit uuauama mak nenu eishinitautshikuau
- Nenu essi meskakent eshinakuats mak tshika minu uauitakanu tshetshi eka piuenitakant ne SARA kaishiuauitakuau nenua eshi senimatau aueshisha, eukuan wolffish, leatherback, sea missinaku mak kutakuts mistimekuts katatau
- Uments auentshi essi mamitunenitakuau uets tshissenitakauau, tshetshi etuish tutakuau nenu eshissenitakuau uantussenitakuau eshintussenitakants

Napuatua eshinispishats nashipetamits tsheishinakuats Uaishinakuatakant mishiue etukauats nete tsheishiuaitakant katakuats.

TAN TSHEISHINAKUTAKANT MAK EUAUTAKANT TSHETSHI ISHITUTAKAT  
Tshepishum 2022

- Uments EAs, kaishitshiuapatakuau eukun miste uautinamuts tsheupatinuekuau nenu essi meskakenets nenu eshinakunits mak ketshestinuapatshtetau tante kestetshe enishitutakanits mak nenu eshiuaitakanits eshihakunits
- Uinipekuts katats aueshishats mak ume pineshishats eshintussenimakanits etshitapamaantau nenu atuskanitshe mak etutakanitshe nenu uatutakanits tshetshi tshishitakanits essi ssenitakanits
- Ume tshika ntumeskakanu nenu essi uintussentakant eukun Environmental Studies Research Fund, Petroleum Research Newfoundland mak Napuatua, mak and Memorial University of Newfoundland
- Mak tsheuminu kanaueinitakant nenu essi pikunakau tante nenu tshetitakuau mak nipinu tshetshi miste apastakant nenu essi uanishinakuatakant ume essi atuskatakantshe
- Tante eiapits tsheishi tutakanit pimi enanuakantshe nenu essi atussenanuts nete
- Kaatusseshuts kauiskutamuakanits nenu pimina enanuaknatshe tan tsheitshi tshetshinue tutakuau
- Utte pimi kaatuskanuts eukun mishiue tutaknipan utte unauitakant Guidelines (NEB et al. 2008), eukun eiapits eshi uaitakuau nete uinipekuts tan eshinakunits nenu metocean entussentitaknits, eiapits eshintussentakants ume epinishinatekuau nenu kapukunentshest kaatissenanuts

## **7.4 TSHEITSHI NISHINAKUATAKANT NE MISHIUE ETAPITUUSTAKANT NE MAMUUSTAKANTSHE**

Nenu essi tutakant euaitakantshi mak tan pimi mak kampimiut tshekuana neatussenanuts etenitakant nenu tsheishinakuats ume nenu Napuatua SEA kaishishuetau:

- Passe SAR takunipan nenu essenitakuau put kie mitshima nash Napuatua SEA kaishishuetau mak tshetshi miste nanuiukanits tshekuan uameapitshitshitan mak eshinitakutshik utte SARA kaui miste animenitakuau tan etenitakuau mak tshetshi ueuestakanit ume uanutshikanits nenu atusseun mak uantusmeskakent.
- Mitshenua nete etatau nameshats mak miste animenitakuau nameshats uets iniunit mak uets nitautshikuau (benthic kakuskanuits) etats (e.g., euahutau, enespantau, mak nenu emamupinits). Ume essi ntussenitakanits assin tshetshi eka nanamisteskuets kaishintussenitakant, tante eshitenitakant, tshe eiapits tutakant eka shuka mishitakant nenu tshetutakant tshekuan ama tshika uitshitutakant.
- Utte naneu (mistukuts) eukun miste tshiapatshitauts nenu natuapatakuau mitshiminu, enatshikussetau, entuiutau nenua aueshisha eukun mane uapusk, pineshishats, entuuauetau mak enatshimushutau. Tshenakautenitakanits tsheeka miste pikunikankanits nenu tshessi meatshiatakuau uipats kaishiapatshitakanits eukun tshika miste animenitakuau nenu etenitakunits uipats esk eka nutshikanits ume pimi mak kapimiut tshekuanu neatussenanuts.
- Mak nenu ume miskumin tan eishitan mak eiapits ne miskumin tan tshetutakanits nenu etenitakanit tshetinanits.
- Miskumin etatatshi mak miskumina kamiste nakatuapamats eukun tshitshiue tshemiste tshitapamats tan tsheishi itenimakant tshetutakant.



Napuatua eshinispishats nashipetamits tsheishinakuats Uaishinakuatakant mishiue etukauats nete tsheishiuauitakant katakuats.

TAN TSHEISHINAKUTAKANT MAK EUAUTAKANT TSHETSHI ISHITUTAKA T  
Tshepishum 2022

- Kaishintussenitakant assin tamperkuts tshishinanamiskuets, tante muku, tshika ueueshitakanu tshetshi ntussentakant ume uitutakanteshe nenu essi takuau nete kanuatiimeshenanuts mak tshetshi eka miste nutshiakant nenu etataui tsheka tananuts nete etats kanutimeshets. Animentakun tshetshi uauitakanits eukun Nunatsiavut kakussetau ama tats nete nutimeshenanuts, mitshiminu mak tats nete mak nete tsheutshimaua kuetetshe etanitshi mak nenu enutimeshenanuts
- Uments ROV kantussenitakuau eukun tshitshue tshemiste kanuauenitakuau nenu essi ntussenitakanits etantshi nenua corals / benthic nete mitshima etakuatshi etananuts utenats eitishuenanuts tshemamu atussenanuts
- Nenu uaiu essi tananuts utte Napuatua SEA kaissishuetau eukun tshitsiue tshemiste timikats tshetshi tshitapatikant eukun miste animenitakuats. Muku peikun tan tsheitenitakuats mak ueuetenitakuau mak pimi nenu essi nanuakant tan tshetshinue tshetutakanits mak utts miste nakatuapamakanits mak utts miste nakatuapamakanit pimin enutshikuakant.
- Nete etatanutshe eunkun eiapits tshetakuats nenu tshetshi apatshitakanits mak tsheishi skuatamuakanits auentshi nenu tutakanaitshi pimina enanuakanitshi mak tshetakiunitshi tutakanitshe etatananuts.
- Ume eshapitshitskuau kanutimeshets eukun enatupiniuts ne Kamanikanenakanit mak shrimp mak pemituteu mak etauanu nenua groundfish kaukuaskatakuau nenu tshika miste uinak atuenikanua nenu etussenimakants ume groundfish nenu uaishitshitapamaknat eshinakunits eukun ume kanutimeshets tshetshi minuats takuau eskunte.
- Uments groundfish tshika etuish miste ntussenimakanuts nenu tsheiuapatinuaunits tan eishiniutau ume eshinakushitau.
- Netamuk atusseun tsheuauitakuau ement EA eishi ishikaniunanuts eukun eiapits kanutimeshets
- Eukun tshika tetaunikan essentakanits ume essi nukuats, tsheinitits kanutimeshets mak eshi apatshitakuau kanutimeshets katats mishinau. Uments kamiste ntussenitakuau mak nash uiuapatinuetau tan ne kanutimeshets tshetshi mamu eka takuau nenua pimina enutshikuakanitishi kanutshikuakanitshiekun Napuatua SEA kaishishuetau mak eshiuapatakuau eskunte.

## 7.5 TSHETSHI TSHISTAKANT EUAUTAKANTSHI TAN EISHINAKUTAKANT

Enkun ume SEA kauintussenitakants tshemishinanikant takunu tshekuanu uatumishinakuau umenu 2008 Napuatua eshinispishats nete nashipetamits tsheishinakuats mak uauauitakuau, tshetshi nistuaupatakanits nenu euauitakanits etakunits shash. Ume essi uauitakanit tan tsheishinakutatau ute Napuatua eshi nishipetam its nete nashipetamits. Nenu tsheishinakunits mak tshetskunits. Ne uinuau uaishinakutats shash miste tshitipatimupants emeskakants. Tshitshiue tapue animenitakun nenu uauitshinakutakant tshetshi minu nistutamuets nenu tsheishi uapatinueanuts tshekuanu enitautshik mak put mishiue tshekuaunu eshinakuats uaishitshitakant.

Ume kauintussenitakant tshemishinanikant SEA eukun tsheuitamuats nenua Kanata-Nfld mak Napuatua tauts mamu kaatussetau (C-NLOPB) nenu tsheishitapatakanits tshetshi ukanuminanutshe utte Napuatua tauts kaatussenanuts. Mak nash tshetshi tshissenitakanits tsheishi mamu ettu kutakuts mamitunenimakantau. Nete etakuau mak tshessi uapatinueanuts eka shuka eshapashinakuats mak

Napuatua eshinispishats nashipetamits tsheishinakuats Uaishinakuatakant mishiue etukauats nete tsheishiuauitakant katakuats.

TAN TSHEISHINAKUTAKANT MAK EUAUTAKANT TSHETSHI ISHITUTAKA T  
Tshepishum 2022

nete uinipekuts kaatussenanuts nenu uinipekuts uments C-NLOPB tshika miste uitshitapatamuts tan eshinakunits essinu tan tshemiste neshinakunits.

Nenu esk eka tapitu etakunits eukun uinuau nents C-NLPB assinu eshinuautats. Mak ume SEA tshika uintumishinakuau nenu euaitakanits nete kaatussentshi tsheishi tshitapakanits kaatussenanuts, tante eshukum atusseun tshika takun tsheishinakuats tshetakuats tshe mamu nitstunakuatakant, mamu tapuenitakuats tshekustinenanuts mak nete tshenishinakuats neekakmeskakantau tshetshi mamu emishinanikant nenu tsheishiatussenanuts.

Tshitshue mistshet ishinakunipan ne eka shapenitakuats utte Napuatua nashipete kauiatussenanuts. Enkun ume tsheutshimau mak kutakuts kuetetshe katatau tsheutshimauts mak miste nakatuenitakuau ekustitshets. Put mak eshi nakatuenitakant nete eunutshiakanua mak enkun tshitshue eanimenitakuats enkun tshitshue eanimenitakuat enukun tsheishi tshitapatakant mak shash eshetshitakanu nta akunikan 4.6 mak ne assin essi tipenitkant tsheeka nutshiakant mak nash uissenitakant. Ekun mamu tsheui etuish mamitunenitakant nenu eshinitautshik tshekuan mak eishi minu ntussenitakanits uipats kaitinanuts tante etananuts tsheeka nutshiakant nenu uinuau IK nitamuk auentshi kaishintussenitakuau.

Ume utte kanutshiakanits ekun eka shuka shapatenitakuats ama shuka nustuapakanu tshetshi ettu mishitakant ne tshenispishats tsheishinakuats. Nenu essi mitshekua tsheishiuauitakantshi tsheishinakuats, mak nenua tsheishi stinuatshitakant mak etuish pishitakanit. Tshika nakatuenitakant tan espishats mak eshinakuats tshemamupitakant nenu uinuau eueuetishuetau, mak tshika uauitamatunanu ne etishueanuts, mak uments uinuau C-NLOPB kaishiuitamatshetau. Ume kaatusseshuts eukun mamu tshetakuau ne C-NLOPB kaishinikatets mak tshetapuetakuau nenu mishiue eshi uauitakanits tshekuanu emishinanikanits. Mak eshi mamustakanits ne atussenanuts tshe eka shuka tutakanits ne attussenanuts tshe eka shuka tutakanits nenu etakunits kauintussenitakuau put mak kutakunu etakunits nenu eishinishueanits ume kutakua nenua tsheutshimau (eg. Kanutshikuats nemesha utte uinipekuts) aueshisha kamiste nakatuenimats kanutshimeshatau mishiue auentshi mak kutakuts auentshi kamiste apatshitakuau nenu uinipekunu. Mak nte kutakuts auentshi katats kauintussenitakuau nenu mishiue eshinakunits tshekuanu nete uinipekuts mak ements kamiste kauintussenitakua enishipanits tshekuanu mak ne kutakuts auentsh tshika miste uauitakanu tan tshinishinakunits neekakameskakantau mak etuish meskatau nenua atusseuna tsheshipitakanits.

Ume essi uauitakanits tshekuaunu mak ne IK mishiue auentshi kaishissenitakuau ekun tshe apatshtakuau nete mishiue mak nete mishiue Napuatua kaistussenanuts nete SEA kaishiuauitakuau enukun eishitishueanits mak miste animenitakunu nenu passe etuish mamu atussenanuts mak tsheishi nakatuenitakant tshekuan tsheminunakatuenitakant mamu taiantsh. Ume C-NLOPB kaatusseskatatuu nenu uatshishipinitats mak nenu mamu tsheishi atusseskatau nenu kauinissishuetau nenu tshe atussenanuts mak tshetshi mamu uinistutakanits mak tsheishi miskutinakuau takunitshe. Ume mishue SEA kantumesketakuau uaissishuetau, ement IK uin mamu atussenanuts entussenitakant mishiue tshekuanu. Ume uinuau C-NLOPB katussekuau mamu essi uauitakanits kauitutakanits atusseuna.

Napuatua eshinispishats nashipetamits tsheishinakuats Uaishinakuatakant mishiue etukauats nete tsheishiuaitakant katakuats.

TAN TSHEISHINAKUTAKANT MAK EUAITAKANT TSHETSHI ISHITUTAKA T  
Tshepishum 2022

Enkun eiapits mishinanikanipan uments uinuau l6 auentshi mishue kauitussenikants mak katatau nete eatussenanants mak nenu emiste animenitakunits tan kaishiuaitamiakanitnenu eitishueanits kauiatussenanants utte Napuatua nashipetamits kauiatussenanants. Uments C-NLOPB eukun etuish tshetshi nitussenitakuau mak kaishi uaitamuakanits nete mamu kaatussekuau tshetshi etuish nissishuetau tan etenitakuau mamu katananants.

Kaissishueanants euku C-NLOPB ntenitamupants tan tshenispintau nenua katusseshuntshi nete etananants mak auentshi kutakuts kamamu tananants. Enkun takunipan emitshetipanits shash uipats, eku mak ne miste tsheutshimauts kutakuts nenu essi ushitakuau tsheinishihuets. Mak nete C-NLOPB shash uinuau mishitapants tan eshinkunits tshetakunitshi nenua tshetanitshi pepemau eshinakunitshi atusseuna (EA's) nenu kaishi euaitakanits emenua atusseuna eukun uments kantussenitakuau tampekuts enanamiskuents assinu. Shash ishinakunu uments SEA kaishitshitapatakuau shash tapuetuepants nenu kutakua auenua eshinakushintshi, mak kutakuts uinipekunu kaapatshitakuau enkun emiste animenitakunipan.

Ume SEA kaishitshitapatakuau shash uapatinuepants tan tsheishinakutakanits ne atusseuna mak miste uinistutamueuts nenu passe eshinakutakant eukun eiapits tshetshi eka miskutinakant, nenu essi miskutinakant eukun tshika miste tshitapakanu nenu tsheishi uapatinakanits netamuk auentshi eshinakushits mak tan eishiuaitakuau. E nukuan tshitshiue tshika miste animenitakun tshetshi nistuunikant tan mamu tsheishinakuts. Tshetshi etuish nistutamatshet tan tsheishinakuats. Utte mamu tsheuashitakant uatusseskatuananants mak tshemishitakantshi atusseuna. Mamu enua eshinakutakantshi euaitakant. Enkuan auentshi emiste apatshitakuau nete mishiue etatau mak nete uinipekuts eukun eiapits emistetustemakats. Ument C-NLOPB kantutussenitakuau tshika etuish atusseskatatau mamu etananants mak nenua kanutshikuatshi namesha tshetshi ettu uinistutamentshi nenu emiskutshipanitshe nete eshinakunits enitautshinik tshekuanu mak auenua essi apatshitantshi utte Kanata Nfld kauintutussenanants.

Ume essi meskatau nenu uaishiuaitakant eukun uinuau SEA takuna tshekuanu uantumishinakuau tshetshi etuish uatshishitats nenu eishi mamu kauitutakants nete kaatussenanants eukun uatshitshitakant mak tshe tutakuau nenu kuestianits make eatussenanants make tshetshi ettu nakatuenimakanits tan tshenishinakuatshi neekakameskakantaukie tshekuaana eshinitautshikuau kie nenu atuskatakantshe uanakatuenitakant. Takuna tapue tshe mishitakant atusseuna mak tshetshe tapuetatunanants tanueishinakuatakantshi nenua eatussanitshe. Tshemamituenitakant tan mak tsheishitshitapatakant tshekuan. Ume tan espishats tan tsheishi ueuetenitakuau uments C-NLOPB nenu eueuetishuetau mak tsheutshimaua kassenitamentshi mak nents auentshi mamu katats mak kanakauenitakuau eshikaniunanits. Uments C-NLOPB tshetshi ntumeskatau nenu kutak eshinakunits eshitshitapakanits tshekuaunu mak tshetshinue tshenakatuenitakants. Uatutakanitshi mak tsheunitutakant tan essishuanants SEA nenu essi ueuetenitamuts tan eshinakunits nete mamu kauiatussenanants utte Napuatua mamu kauiatussntshi nete etananants.